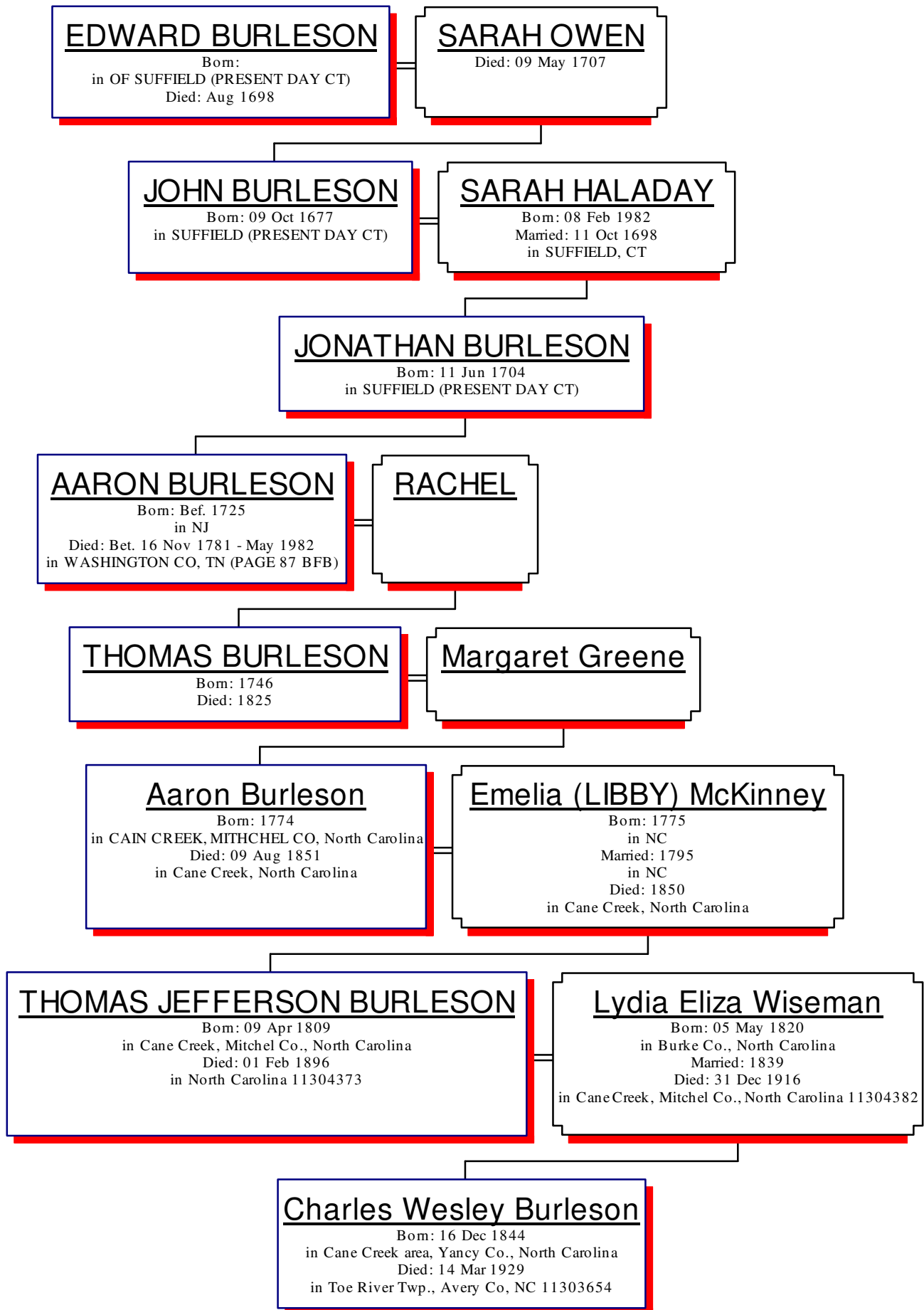


# Direct Descendants of EDWARD BURLESON





L/R TOP ROW, HENRY, WILLIAM, JAKE, SAM, JODIE, ROBERT, ROBERT'S WIFE ORA, AND FRANK  
L/R BOTTOM ROW, SCHOOLTEACHER EVA HARRIS, OLIVE, CHARLES WESLEY, TUPPA AND BABY JESSIE

*Descendants of Charles Wesley Burleson  
Generation No. 1*

1. CHARLES WESLEY<sup>8</sup> BURLESON (*THOMAS JEFFERSON*<sup>7</sup>, *AARON*<sup>6</sup>, *THOMAS*<sup>5</sup>, *AARON*<sup>4</sup>, *JONATHAN*<sup>3</sup>, *JOHN*<sup>2</sup>, *EDWARD*<sup>1</sup>) was born 16 Dec 1844 in Cane Creek area, Yancy Co., North Carolina, and died 14 Mar 1929 in Toe River Twp., Avery Co, NC 11303654. He married OLIVE SOPHIA ENGLISH 16 Dec 1869 in Mitchel Co, North Carolina, daughter of JOHN ENGLISH and MARTHA OAKES. She was born 06 Oct 1846 in LINVILLE FALLS, BURKE CO, NC, and died 31 Jan 1932 in Plumtree Twp., Avery Co., NC 11303675.

More About CHARLES WESLEY BURLESON & OLIVE SOPHIA ENGLISH:  
Burial: YELLOW MOUNTAIN CEM, PLUMTREE, AVERY CO, NC



- Fact 1: 1850, Yancy Co. NC Pg 417
  - Fact 2: 1860, Yancy Co. NC Pg 393
  - Fact 3: 1870, Mitchel Co. NC Pg 4
  - Fact 4: 1880, Mitchel Co. NC Ed 145/7/22
  - Fact 5: 1900, Mitchel Co. NC Ed 101/2/30
  - Fact 6: 1910, Mitchel Co. NC Ed 150/1
  - Fact 7: 1920, Avery Co. NC Ed 9/12/18
  - Fact 8: First postmaster of Plumtree
  - Fact 9: 14 Mar 1929, Death Bk 8, Pg 204, Avery Co. NC
  - Fact 10: Buried Yellow Mt. Cem., Plumtree, NC
- Military service: CSA CO I 29 NC INF REGT



More About CHARLES BURLESON and OLIVE ENGLISH:  
 Marriage: 16 Dec 1869, Mitchel Co, North Carolina

Owner and operator of the Burleson's Store, C. W. was a well known and a highly respected businessman. The store has been immortalized both in Gloria Houston's book, "Littlejim's Gift," and the movie "Winter People" was filmed on location at Plumtree. He was also the first Post Master of Plumtree, NC

Children of CHARLES BURLESON and OLIVE ENGLISH are:

2. i. ROBERT MILTON<sup>9</sup> BURLESON, b. 28 Feb 1871, MITCHELL CO, NC; d. 15 Sep 1957, Grassy Creek, Mitchel Co., NC 47702444.
3. ii. TUPPIE LEANNA BURLESON, b. 24 Jun 1873, North Carolina; d. 23 Dec 1959, 37126449.
4. iii. SAMUEL LEANDER BURLESON, b. 16 Nov 1875, MITCHELL CO, NC; d. 24 Aug 1945, Plumtree Twp., Avery Co., NC 60291600.
5. iv. JODIE LEE BURLESON, b. 20 Dec 1877, North Carolina; d. 11 Oct 1976, BUNCOMBE CO, NC 36433906.
6. v. DAVID PATTERSON BURLESON, b. 15 May 1880, HAWK, MITCHELL CO, NC; d. 23 Aug 1957, Grassy Creek, Mitchel Co., NC 47525411.
7. vi. WILLIAM BROWN DR BURLESON, b. 01 Jun 1882, MITCHELL CO, NC; d. 02 Oct 1958, Plumtree Twp., Avery Co., NC 47808598.
8. vii. HENRY BURLESON, b. 05 Jun 1885, North Carolina; d. 07 Nov 1975, MARION, MCDOWELL CO, NC 33301537.
9. viii. FRANK BURLESON, b. 01 May 1888, North Carolina; d. 23 Sep 1959, Banner Elk Twp., Avery Co., NC 33301723.

*Generation No. 2*

**2.** ROBERT MILTON<sup>9</sup> BURLESON (*CHARLES WESLEY<sup>8</sup>, THOMAS JEFFERSON<sup>7</sup>, AARON<sup>6</sup>, THOMAS<sup>5</sup>, AARON<sup>4</sup>, JONATHAN<sup>3</sup>, JOHN<sup>2</sup>, EDWARD<sup>1</sup>*) was born 28 Feb 1871 in MITCHELL CO, NC, and died 15 Sep 1957 in Grassy Creek, Mitchel Co., NC 47702444. He married ORA A. ENGLISH 11 Dec 1894 in Mitchel Co, North Carolina. She was born 14 Feb 1875 in SULLIVAN CO, NC, and died 07 Feb 1962 in Grassy Creek, Mitchel Co., NC 47702463.

More About ROBERT MILTON BURLESON & ORA A. ENGLISH:  
 Burial: SPRUCE PINE MEM CEM, SPRUCE PINE, MITCHELL CO, NC



More About: ROBERT BURLESON and ORA ENGLISH:

Burial: SPRUCE PINE MEM CEM, SPRUCE PINE, MITCHELL CO, NC

Fact 1: 1880, Mitchel Co. NC Ed 143/ /18, Snow Creek

Fact 2: 1900, Mitchel Co. NC Ed 101/13/81

Fact 3: 1910, Mitchel Co. NC Ed 150/15

Fact 4: 1920, Unicoi Co. TN Ed 188/13/93

Fact 5: 07 Feb 1962, Death Bk 35, Pg 28A, Mitchel Co. NC

Fact 6: 1910, 4 children 4 living

More About ROBERT BURLESON and ORA ENGLISH:

Marriage: 11 Dec 1894, Mitchel Co, North Carolina

Children of ROBERT BURLESON and ORA ENGLISH are:

- i. MARTHA ORA<sup>10</sup> BURLESON.
10. ii. MILTON ENGLISH BURLESON, b. 01 Jul 1895, MITCHELL CO, NC; d. 29 Jan 1990, SPRUCE PINE, MITCHELL CO, NC 65657304.
11. iii. OLIVE JANETTE BURLESON, b. 15 Oct 1897, North Carolina; d. 18 Mar 1993, AVERY CO, NC 75837138.
12. iv. MABEL BURLESON, b. 16 Jun 1899, Toe River, Mitchel Co, North Carolina; d. Mar 1982.
13. v. MD JUSTIN M. DR BURLESON, b. 29 Jan 1902, North Carolina; d. Feb 1977, WASHINGTON, TN.

**3.** TUPPIE LEANNA<sup>9</sup> BURLESON (*CHARLES WESLEY<sup>8</sup>, THOMAS JEFFERSON<sup>7</sup>, AARON<sup>6</sup>, THOMAS<sup>5</sup>, AARON<sup>4</sup>, JONATHAN<sup>3</sup>, JOHN<sup>2</sup>, EDWARD<sup>1</sup>*) was born 24 Jun 1873 in North Carolina, and died 23 Dec 1959 in 37126449. She married ALBERT ROSECRANS BROWN 17 Jul 1895 in Mitchel Co, North Carolina. He was born 07 Jul 1863 in KNOX CO, TN, and died 29 May 1937 in UNICOI CO, TN 38028889.



Burial: EVERGREEN CEM, ERWIN, UNICOI CO, TN

More About TUPPIE LEANNA BURLESON & ALBERT ROSECRANS BROWN:

Burial: EVERGREEN CEM, ERWIN, UNICOI CO, TN

Fact 1: 1880, Mitchel Co. NC Ed 145/7/22

Fact 2: 1900

Fact 3: 1910

Fact 4: 1920

Tuppie Leona was born June 24, 1873. She married Albert R. Brown of Erwin, Tennessee. Albert owned the A. R. Brown Store in Erwin, Tennessee.

More About ALBERT BROWN and TUPPIE BURLESON:

Marriage: 17 Jul 1895, Mitchell Co, North Carolina

Children of TUPPIE BURLESON and ALBERT BROWN are:

- i. PAUL JUDSON<sup>10</sup> BROWN, b. 03 Dec 1896; d. 22 May 1898, 100683562.  
More About PAUL JUDSON BROWN:  
Burial: EVERGREEN CEM, ERWIN, UNICOI CO, TN
- ii. JESSE BURLESON BROWN, b. 29 Apr 1899; d. 13 Jul 1964, 37126431.  
More About JESSE BURLESON BROWN:  
Burial: EVERGREEN CEM, ERWIN, UNICOI CO, TN

14. iii. OLIVE ENGLISH BROWN, b. 30 Sep 1903; d. 21 May 1995, 12235600.  
 iv. NANCY ALBERTA BROWN, b. 11 Jun 1908; d. 25 Feb 1999, 10710774.  
 More About NANCY ALBERTA BROWN:  
 Burial: EVERGREEN CEM, ERWIN, UNICOI CO, TN  
 v. JODIE HELEN BROWN, b. 28 Feb 1913; d. 16 Aug 2006, 37126438.  
 More About JODIE HELEN BROWN:  
 Burial: EVERGREEN CEM, ERWIN, UNICOI CO, TN  
 vi. MILTON HAYNES BROWN, b. 14 Oct 1916; d. 29 Mar 1994, 131204335; m. BERYL KATHLEEN STOKER; b. 07 Aug 1919, SALISBURY, ROWAN CO, NC; d. 04 Oct 2014, ERWIN, UNICOI CO, TN 136891442.  
 More About MILTON HAYNES BROWN:  
 Burial: EVERGREEN CEM, ERWIN, UNICOI CO, TN  
 More About BERYL KATHLEEN STOKER:  
 Burial: EVERGREEN CEM, ERWIN, UNICOI CO, TN

**4.** SAMUEL LEANDER<sup>9</sup> BURLESON (*CHARLES WESLEY*<sup>8</sup>, *THOMAS JEFFERSON*<sup>7</sup>, *AARON*<sup>6</sup>, *THOMAS*<sup>5</sup>, *AARON*<sup>4</sup>, *JONATHAN*<sup>3</sup>, *JOHN*<sup>2</sup>, *EDWARD*<sup>1</sup>) was born 16 Nov 1875 in MITCHELL CO, NC, and died 24 Aug 1945 in Plumtree Twp., Avery Co., NC 60291600. He married BRIDGET (BIDA) PENLAND Abt. 1908. She was born 22 Mar 1884 in MITCHELL CO, NC, and died 19 Jun 1974 in North Carolina 60302055.

More About SAMUEL LEANDER BURLESON & BRIDGET (BIDA) PENLAND:  
 Burial: YELLOW MOUNTAIN CEM, PLUMTREE, AVERY CO, NC



- Fact 1: 1880, Mitchel Co. NC Ed 145/7/22
- Fact 2: 1900, Mitchel Co. NC Ed 101/2/30
- Fact 3: 1910, Mitchel Co. NC Ed 150/1
- Fact 4: 1920, Avery Co. NC Ed 9/12/18
- Fact 5: 24 Aug 1945, Death Bk 230, Pg 95, Avery Co. NC
- Fact 6: Buried Yellow Mt. Cem., Plumtree, NC
- Fact 5: SS# 241-60-1186

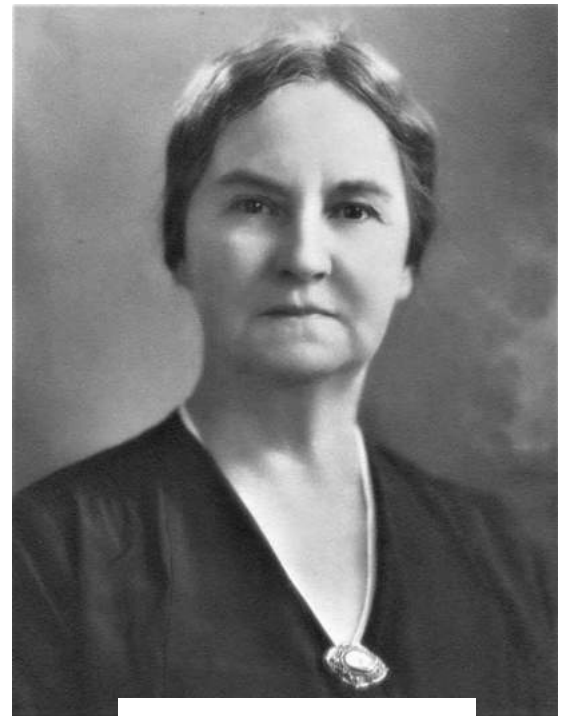
Samuel Leander Burleson was born 1875. He married Bida Pendland. Census records reveal a Samuel Leander, a mica dealer from South Carolina was boarder at the Burleson home. One would assume that C. W. and Olive named their third son in honor of this gentleman. The name Samuel Leander was carried on when Sam's sister, Jodie Lee, gave the name to her son.

More About SAMUEL BURLESON and BRIDGET PENLAND:  
 Marriage: Abt. 1908

Child of SAMUEL BURLESON and BRIDGET PENLAND is:

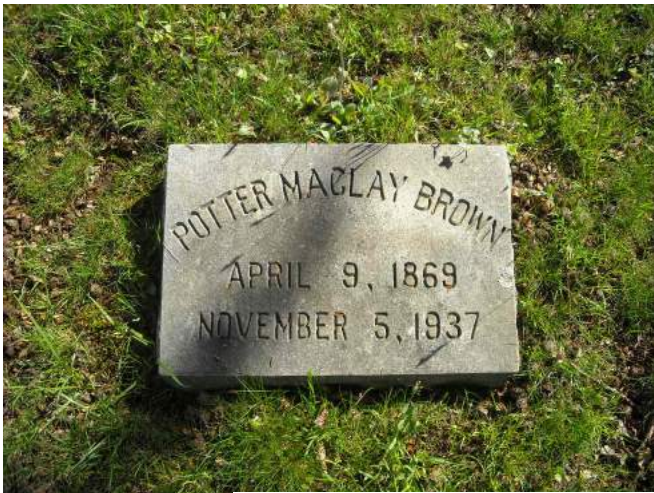
15. i. CHARLES WESLEY<sup>10</sup> BURLESON, b. 30 Oct 1908, MITCHELL CO, NC; d. 09 Apr 1941, Plumtree, Avery Co., NC 60302231.

5. JODIE LEE<sup>9</sup> BURLESON (*CHARLES WESLEY<sup>8</sup>, THOMAS JEFFERSON<sup>7</sup>, AARON<sup>6</sup>, THOMAS<sup>5</sup>, AARON<sup>4</sup>, JONATHAN<sup>3</sup>, JOHN<sup>2</sup>, EDWARD<sup>1</sup>*) was born 20 Dec 1877 in North Carolina, and died 11 Oct 1976 in BUNCOMBE CO, NC 36433906. She married POTTER MCCLAY BROWN 14 Sep 1898 in Mitchell Co, North Carolina. He was born 09 Apr 1869 in NEW ZEALAND, and died 05 Nov 1937 in ALTAMONT, AVERY CO, NC 36433709.



Jodie Lee Burleson Brown

BR/L-R FRANK, HENRY, WILLIAM FR/L-R R MILTON, JODIE, SAM, DAVID



More About JODIE LEE BURLESON & Potter McClay Brown:  
Burial: RIVERSIDE CEM, ASHEVILLE, BUNCOMBE CO, NC

Fact 1: 1880, Mitchel Co. NC Ed 145/7/22

Fact 2: 1900

Fact 3: 1910

Fact 4: 1920

More About POTTER BROWN and JODIE BURLESON:

Marriage: 14 Sep 1898, Mitchel Co, North Carolina

Children of JODIE BURLESON and POTTER BROWN are:

i. MARIAN LEE<sup>10</sup> BROWN, b. 24 Jun 1899; d. 16 Oct 1992, AVERY CO, NC 36433632.

More About MARIAN LEE BROWN: Burial: RIVERSIDE CEM, ASHEVILLE, BUNCOMBE CO, NC

ii. JOHN BROWN.

iii. ANN BROWN.

16. iv. VANCE MEBANE BROWN, b. 11 Jun 1914; d. 22 Jan 2006, UNION, UNION CO, SC 13237044.

v. SAMUEL WESLEY BROWN, b. 19 Jul 1905, Mitchell Co, North Carolina; d. 20 Mar 1996, 113009990.



## A Legend In <sup>92</sup> His Own Time

BY BERTIE CANTRELL

On July 19, the man known in Avery County as "a legend in his own time," turned 86 years old.

The legend is Sam Brown, of Crossnore, a man who attended Yale College, studied sculpture in Paris, France, and decided he'd rather hunt and farm in Avery County.

The son of Jodie Burleson and Potter McClay Brown, of Crossnore, Sam had three sisters, Marian, Ann, and Marjorie, and three brothers, John, Potter, and Mebane. Ann and Marjorie are deceased. Sam lives with Marian, who is 92 years old.

"Our longevity comes from the Burlesons," said Marian. "Our mother lived to be 99 years old."

When Sam was born here in 1905, Avery County had not been formed. "I reckon I'd have to go to Mitchell County to get a birth certificate," Sam said.

I assured Sam that fact did not make him an outsider.

Sam Brown took up golfing at age 72. He is a familiar sight in his meadow, called "Sam Brown's Bot-

toms," near "Sam Brown Straight," on Highway 221, practicing his golf, while his cattle graze nearby, unperturbed.

Irma Dean, of Newland, was commissioned by Ruby Keener and Lydia Cantrell, employees of the Crossnore Sale Store to bake Sam a cake, for a little party at the Sale Store, which is one of Sam's favorite haunts.

Irma put a golfer on the cake, and said she was sorely tempted to put little cows, and chocolate cow patties around the golfer.

Sam enjoys golfing at Mountain Glen, and often had the late Gene Penland as his partner, according to Judge J. Ray Braswell, of Montezuma, who also enjoyed golfing with Sam. Said the Judge, "You ain't lived til you've been around Sam Brown. He's rich!"

Many of Sam's old hunting buddies have passed away. I remember the lonely vigil Sam kept, and the words he said, when one of them, Clay Wiseman, was dying in Sloop Hospital. "Most of my friends are leaving me," he said with tears in his

bright blue eyes.

There are still a few around, however, such as Theodore Johnson and Bartlett Farmer, of Squirrel Creek, Willie Townsend and Jim Hughes, of Linville, Jim Vance, of Crossnore and Merce and Earl Trice, of Newland. Undoubtedly Sam will pass the mantle on to Earl Trice, who at age 40 is the most active bear hunter in Avery County, with the makings of legend himself.

All of the hunters named tell bear tales involving Sam Brown that make the hunting series on television pale by comparison. Such as the time Sam killed a bear with nothing but his barlow pocket knife, after his gun had jammed. A modest man, Sam was reluctant to talk about the incident. "It's a pretty gory tale," Sam said. After much prodding on my part, Sam told how the bear had decimated approximately nine of the hunting party's best bear dogs when he went to the dogs' aid with his knife (everyone knew Sam loved dogs). "About half an inch was gone from the tip of the blade," Sam said, "but I kept going at his belly with the knife until I got him down, and his insides were strung out for several feet. Then I finished him off with a rock." So grows the legend.

"Oh, it wasn't really that big a bear," Sam said quietly, "but you know when one is right upon you, it weighs 350 pounds!"

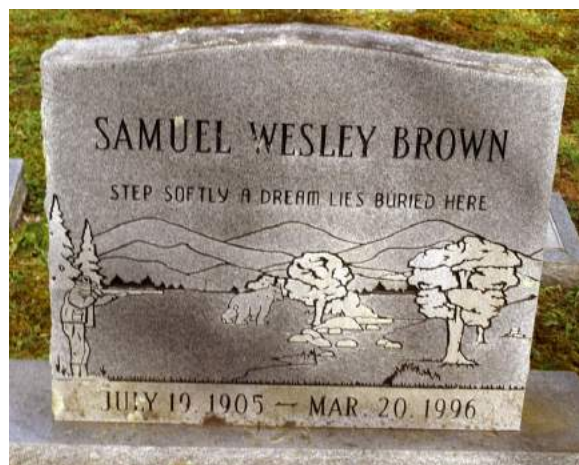
Until recent years I had heard many young men remark that Sam Brown could outwalk any of them in Linville Gorge.

So much could be written about Sam Brown, it would take a large book just to tell the highlights.

Asked his philosophy of life, in a few short words, Sam replied, "One day at a time, and stick with the game."

Happy Birthday Sam Brown. You are part of Avery County's history, and much loved.

More About SAMUEL WESLEY BROWN:  
Burial: FLETCHER CEM, NEWLAND, AVERY CO, NC



Jodie Lee was born 1877. She married Potter M. Brown, Jr. and they made their home near Crossnore, North Carolina. Jodie's son Sam, was a Rhodes Scholar and he also studied art in France. Sam was never interested in 'keeping up the Jones,' he truly enjoyed the simple life. Sam was a very handsome fellow, lifelong bachelor, and a polished individual beneath a sometimes, deceptive outward appearance. He was a tall handsome fellow with beautiful, 'Burlson blue eyes', and a distinguished mustache. To know Sam was to love him; a truly unforgettable character.

Fact 1: 1910

Fact 2: 1920

Fact 3: 19 Jul 1905, Birth Bk 1, Pg 232 Mitchel Co. NC

- vi. MARGIE E. BROWN, b. 07 Jan 1907, Mitchel Co, North Carolina.

More About MARGIE E. BROWN:

Fact 1: 1910

Fact 2: 1920

Fact 3: 07 Jan 1907, Birth Bk 3, Pg 1 Mitchel Co. NC

- vii. POTTER MCCLAY JR BROWN, b. 31 Oct 1907, Mitchel Co, North Carolina; d. 15 Jul 1993, ASHEVILLE, BUNCOMBE CO, NC 36433144.

More About POTTER MCCLAY JR BROWN:

Burial: RIVERSIDE CEM, ASHEVILLE, BUNCOMBE CO, NC

Fact 1: 1910

Fact 2: 1920

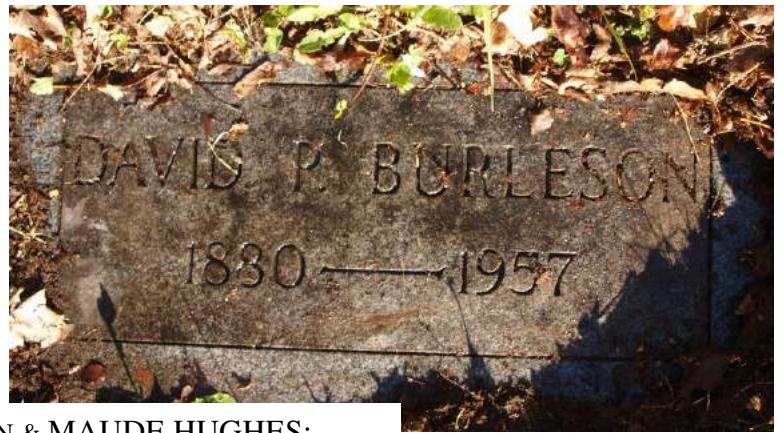
Fact 3: 31 Oct 1907, Birth Bk 4 Pg 118 Mitchel Co. NC



**6.** DAVID PATTERSON<sup>9</sup> (JAKE) BURLSON (*CHARLES WESLEY*<sup>8</sup>, *THOMAS JEFFERSON*<sup>7</sup>, *AARON*<sup>6</sup>, *THOMAS*<sup>5</sup>, *AARON*<sup>4</sup>, *JONATHAN*<sup>3</sup>, *JOHN*<sup>2</sup>, *EDWARD*<sup>1</sup>) was born 15 May 1880 in HAWK, MITCHELL CO, NC, and died 23 Aug 1957 in Grassy Creek, Mitchel Co., NC 47525411. He married MAUDE HUGHES 15 Oct 1907 in Mitchel Co, North Carolina, daughter of MARCUS HUGHS and ELIZABETH BAIRD. She was born 07 Aug 1884 in AVERY CO, NC, and died 02 Jan 1957 in SPRUCE PINE, MITCHELL CO, NC 47525412.

David Patton, known as (Jake) was born in 1880. He married Maude Hughes, who was the daughter of Brown Hughes of Newland, North Carolina.





DAVID PATTERSON BURLESON & MAUDE HUGHES:  
Burial: HUGHES CEM, HUGHES, AVERY CO, NC

Fact 1: 1900, Mitchel Co. NC Ed 101/2/30

Fact 2: 1910, Sullivan Co. TN Ed 172/8/96

Fact 3: 1920, Sullivan Co. TN Ed 179/8/34

Fact 4: Related to family AA6112 & AA61235

Fact 5: 15 May 1880, Birth Hawk, Mitchel Co, NC Bk 4, Pg 135

Fact 6: 23 Aug 1958, Death Grassy Creek, Mitchel Co. NC Bk 33, Pg 20A

Fact 7: 10 Aug 1967, Probate Mitchel Co. NC Bk 6, Pg 51

Fact 8: Buried Hughs Cem., Hughs, Avery Co. NC

Fact 5: 02 Feb 1957, Death Grassy Creek, Mitchel Co. NC Bk. 33, Pg 21A

More About DAVID BURLESON and MAUDE HUGHES:

Marriage: 15 Oct 1907, Mitchel Co, North Carolina

Children of DAVID BURLESON and MAUDE HUGHES are:

- i. ELIZABETH BAIRD<sup>10</sup> BURLESON, m. HUGH CORBLE.
- ii. MARTHA BURLESON, m. LUKE HAFER.
- iii. JOHN BURLESON.
- iv. MD DAVID PATTERSON DR JR BURLESON, b. 04 Oct 1909, BRISTOL, SULLIVAN CO, TN; d. 16 May 1938, SPRUCE PINE, MITCHELL CO, NC 47525414.

More About MD DAVID PATTERSON DR JR BURLESON:

Burial: HUGHES CEM, HUGHES, AVERY CO, NC

Fact 1: 1910, Sullivan Co, TN Ed 172/8/96

Fact 2: 1920, Sullivan Co. NC Ed 179/8/34

Fact 3: 15 May 1937, Death Mitchel Co, NC Bk 15, Pg 119

Fact 4: 19 May 1937, Probate Mitchel Co, NC Bk 3, Pg 218

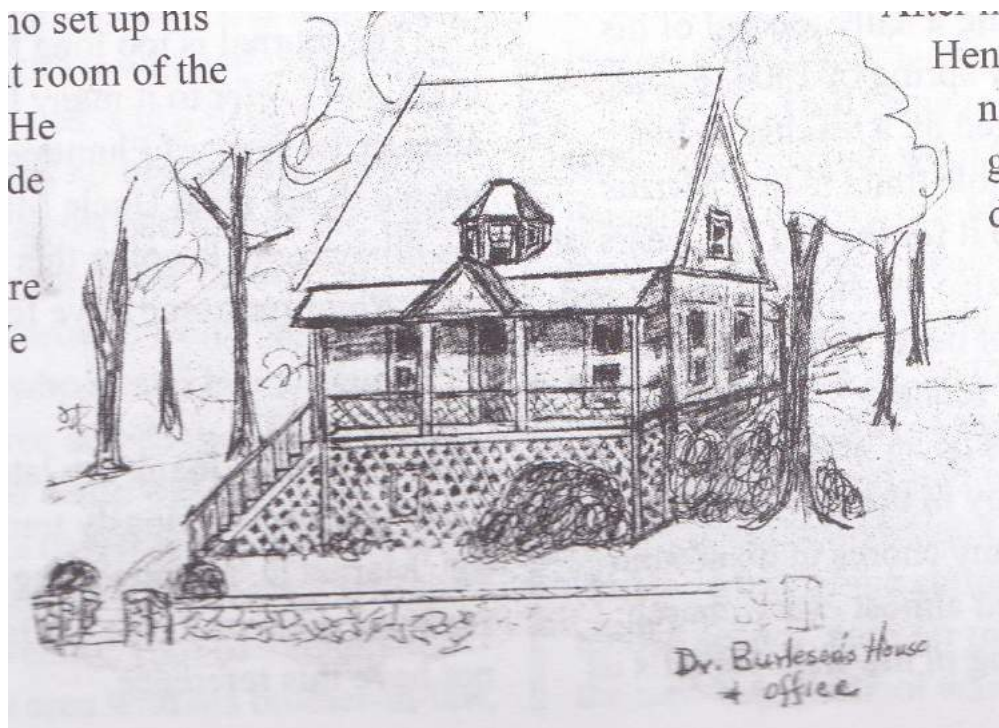
17. v. BROWN HUGHES BURLESON, b. 26 Dec 1915, MITCHELL CO, NC; d. 19 Apr 1964, SPRUCE PINE, MITCHELL CO, NC 47594497.
- vi. OLIVE E. BURLESON, b. Abt. 1919, Tennessee.

7. WILLIAM BROWN DR<sup>9</sup> BURLESON (*CHARLES WESLEY*<sup>8</sup>, *THOMAS JEFFERSON*<sup>7</sup>, *AARON*<sup>6</sup>, *THOMAS*<sup>5</sup>, *AARON*<sup>4</sup>, *JONATHAN*<sup>3</sup>, *JOHN*<sup>2</sup>, *EDWARD*<sup>1</sup>) was born 01 Jun 1882 in MITCHELL CO, NC, and died 02 Oct 1958 in Plumtree Twp., Avery Co., NC 47808598. He married (1) GRACE OLLIS. She was born 02 Mar 1907 in MITCHELL CO, NC, and died 11 Jul 1934 in Banner Elk Twp., Avery Co., North Carolina. He married (2) ELIZABETH GODFRY. She was born 28 Sep 1905 in AVERY CO, NC, and died 24 Jun 1971 in ASHEVILLE, BUNCOMBE CO, NC 74638375.

William Brown, born in 1882, became a physician. He received his Doctor of Medicine degree from the University of Maryland in 1915, and continued his post-graduate work at Tulane University in New York. Dr. Burleson established his practice at Plumtree, and spent his life dispensing health care to the mountain people he loved. He and another local physician, Dr. Sloop once performed surgery on a patient, outdoors, beneath an apple tree. Dr. Burleson was a very compassionate, competent and caring doctor, who relieved untold suffering during his long career. He married Grace Ollis and they had one daughter. Dr. William Brown Burleson died in 1958.



**WILLIAM BROWN DR BURLESON & GRACE OLLIS & ELIZABETH GODFRY:**  
Burial: YELLOW MOUNTAIN CEM, PLUMTREE, AVERY CO, NC



- Fact 1: 1900, Mitchel Co. NC Ed 101/2/30
- Fact 2: 1910, Mitchel Co. NC Ed 150/1
- Fact 3: 1920, Avery Co. NC Ed 9/12/18
- Fact 4: 02 Oct 1958, Birth Bk 13, Pg 16, Avery Co. NC
- Fact 5: Buried Yellow Mt. Cem., Plumtree, NC
- Fact 6: Kings College, Bristol, TN, 1 yr
- Fact 7: Lee McRea College, Banner Elk, NC, 3 yrs
- Fact 8: Univ. of MD, Graduated 1915

Child of WILLIAM BURLESON and GRACE OLLIS is:

- 18. i. ELEANORE<sup>10</sup> BURLESON, b. Abt. 1928; d. 16 Sep 1996.

**8.** HENRY<sup>9</sup> BURLESON (*CHARLES WESLEY<sup>8</sup>, THOMAS JEFFERSON<sup>7</sup>, AARON<sup>6</sup>, THOMAS<sup>5</sup>, AARON<sup>4</sup>, JONATHAN<sup>3</sup>, JOHN<sup>2</sup>, EDWARD<sup>1</sup>*) was born 05 Jun 1885 in North Carolina, and died 07 Nov 1975 in MARION, MCDOWELL CO, NC 33301537. He married FANNIE BANNER 31 Oct 1917. She was born 30 May 1896 in North Carolina, and died 07 Feb 1968 in 33301569.

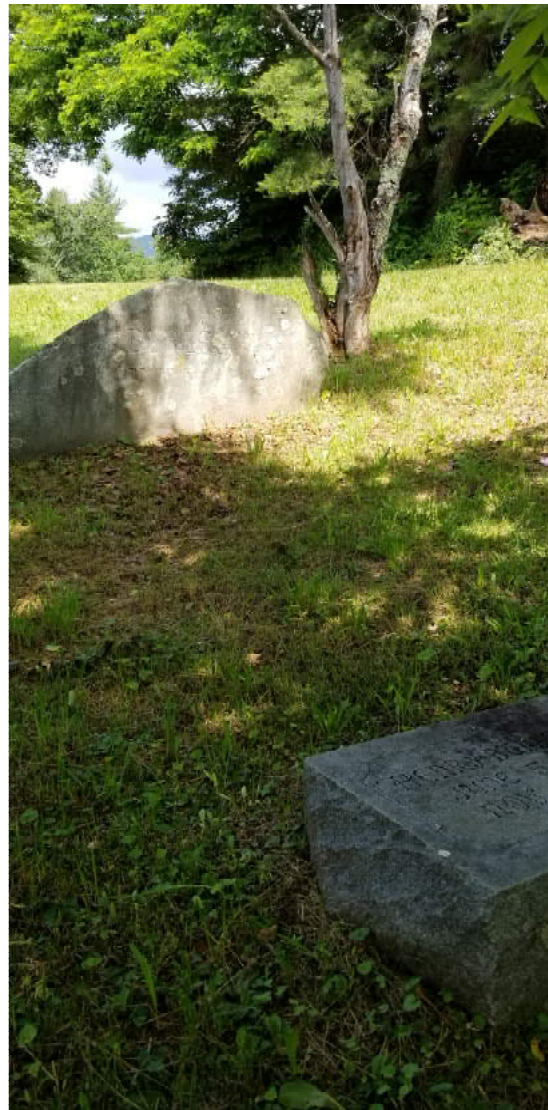
Henry was born in 1885. He married Fanny Banner. A graduate of North Carolina State University, with a degree in electrical engineering. Henry put this technology to use in his native Plumtree. His first project was lights for the house and store. Then he installed electricity for two gristmills, and later furnished electric power for the community. Henry's daughter, Kay Burleson Wilkins, is lovingly known as 'Miss Kay,' a teacher, coach, and most notably a dance instructor. She contributed a great deal to preserving and caring on the traditional dances of the Appalachians. Miss Kay's square dance teams and mountain cloggers were winners of many awards and numerous accolades for their achievements. Frank B, Burleson was born in 1888. He married Bertie Hamrick. As stated earlier, Frank along with his brother Henry, operated Burleson's Store for many years.



BURLESON CABIN, BUILT IN THE LATE 1700s LOCATED NEXT THE OLD BURLESON STORE, SEEN IN RIGHT CORNER OF PICTURE



More About HENRY BURLESON & FANNIE BANNER :  
Burial: YELLOW MOUNTAIN CEM, PLUMTREE, AVERY CO, NC





- Fact 1: 1900, Mitchel Co. NC Ed 101/2/30
- Fact 2: 1910, Mitchel Co. NC Ed 150/1
- Fact 3: 1920, Avery Co. NC Ed 9/12/15
- Fact 4: Buried Yellow Mt. Cem., Plumtree, NC
- Fact 5: SS# 240-50-2397

More About HENRY BURLESON and FANNIE BANNER:

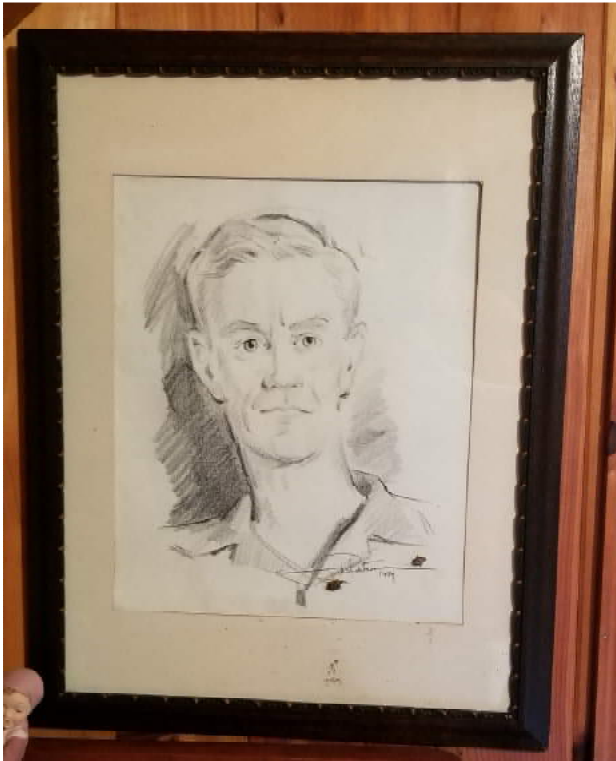
Marriage: 31 Oct 1917

Children of HENRY BURLESON and FANNIE BANNER are:

- 19.
  - i. EDITH LOUISE<sup>10</sup> BURLESON, b. 20 Aug 1918, Plumtree Twp., Avery Co., NC; d. 28 Oct 2006, 125263049.
  - ii. KATHERINE BURLESON, b. 20 Sep 1920, Plumtree Twp., Avery Co., North Carolina; d. 08 Dec 2014, MARION, MCDOWELL CO, NC 139901907; m. WILLIAM BARNET (BILL) WILKINS; b. 1917, Spruce Pine, Avery Co, North Carolina; d. 1975, 91981182.



More About KATHERINE BURLESON & WILLIAM BARNET (BILL) WILKINS:  
Burial: WALNUT GROVE PRES CH CEM, NEWLAND, AVERY CO, NC



On Monday, December 8th, Plumtree native Mrs. Katherine (Burluson) Wilkins resumed dancing.

Affectionately and respectfully known across Avery, Mitchell and Yancey counties as “Miss K” and “Coach K”, she touched the lives of many in these mountain communities during her 94 years.

Miss K will be greatly missed, but certainly not forgotten, by her family, friends, former cloggers, students, basketball players, Rook partners, choir members, Mountain Blenders, opposing coaches, shoe and jewelry shopkeepers and so many others who were fortunate to have had the privilege to know her.

A remembrance service is planned for 11 a.m., Saturday, December 20th at Walnut Grove Presbyterian Church on Three Mile Road with Rev. Kurt Bomar officiating. The family will welcome friends at 10 a.m.

Family and friends are also planning a community gathering celebrating Miss K’s extraordinary life this spring at her cabin by the river in Plumtree. All are welcome to attend and participate.



Miss Kay and Bill Wilkins

In lieu of flowers, the family requests that donations be made to the Bill Wilkins Scholarship Fund (Walnut Grove Presbyterian Church), Hospice, or a charity of your choice.

Fact 1: 20 Sep 1920, Birth Bk 2, Pg 1429, Avery Co, NC

More About: WILLIAM BARNET (BILL) WILKINS  
Military service: T SGT US ARMY WWII



Henry and his Children

Two of C.W.'s sons, Henry and Frank, followed in their father's footsteps; operating the store for many years. One could find all the necessities at Burleson's Store; along with many luxury items; it was a 'one stop shop.' Many a child in the community looked forward to a trip to Burleson's Store for a treat such as candy; or to get the one new pair of shoes he or she would get each year.

9. FRANK<sup>9</sup> BURLESON (*CHARLES WESLEY*<sup>8</sup>, *THOMAS JEFFERSON*<sup>7</sup>, *AARON*<sup>6</sup>, *THOMAS*<sup>5</sup>, *AARON*<sup>4</sup>, *JONATHAN*<sup>3</sup>, *JOHN*<sup>2</sup>, *EDWARD*<sup>1</sup>) was born 01 May 1888 in North Carolina, and died 23 Sep 1959 in Banner Elk Twp., Avery Co., NC 33301723. He married (1) BEATRICE C. VANCE 17 Sep 1910 in Mitchel Co, North Carolina. She was born 26 Jun 1889 in Nashville Tennessee, and died 13 Jul 1915. He married (2) BERTIE CRATER HAMRICK 01 Jun 1917. She was born 04 Jul 1895 in AVERY CO, NC, and died 01 Jul 1983 in BANNER ELK, AVERY CO, NC 33301766.



FRANK BURLESON & BERTIE CRATER HAMRICK:  
Burial: YELLOW MOUNTAIN CEM,  
PLUMTREE, AVERY CO, NC

Fact 1: 1900, Mitchel Co. NC Edn 101/2/30  
Fact 2: 1910, Mitchel Co. NC Ed 150/1  
Fact 3: 1920, Avery Co. NC Ed 9/12/11  
Fact 4: 23 Sep 1959, Death Bk 33, Pg ?, Avery Co. NC  
Fact 5: Buried Yellow Mt. Cem., Plumtree, Avery, NC

More About BEATRICE C. VANCE:

Fact 1: 1900  
Fact 2: 1910  
Fact 3: Buried Yellow Mt. Cem., Plumtree, Avery Co, NC

More About FRANK BURLESON and BEATRICE VANCE:

Marriage: 17 Sep 1910, Mitchel Co, North Carolina

More About BERTIE CRATER HAMRICK:

Burial: YELLOW MOUNTAIN CEM, PLUMTREE, AVERY CO, NC

Fact 1: 1900  
Fact 2: 1910  
Fact 3: 1920, Avery Co. NC Ed 9/12/11

More About FRANK BURLESON and BERTIE HAMRICK:

Marriage: 01 Jun 1917

Child of FRANK BURLESON and BEATRICE VANCE is:

21. i. VANCE BROWN<sup>10</sup> BURLESON, b. 20 Jul 1912, North Carolina.

Children of FRANK BURLESON and BERTIE HAMRICK are:

ii. VANCE BROWN<sup>10</sup> BURLESON, b. 20 Jun 1912, AVERY CO, NC; d. 31 May 2002, NC 47524762; m. HELEN HUGHES; b. 12 Oct 1914, AVERY CO, NC; d. Nov 1979, 47524766.

More About VANCE BROWN BURLESON:

Burial: HUGHES CEM, HUGHES, AVERY CO, NC

More About HELEN HUGHES:

Burial: HUGHES CEM, HUGHES, AVERY CO, NC

22. iii. VIRGINIA BURLESON, b. 01 Jul 1916, Plumtree, Avery Co., North Carolina; d. 17 May 1989.  
23. iv. FRANK RICHARD BURLESON, b. 04 Jul 1918, Toe River, Avery Co, North Carolina.  
24. v. JAMES RUSSELL BURLESON, b. 13 Jul 1923, Toe River, Avery Co, North Carolina; d. 27 Nov 2008, WHITE ROCK, RICHLAND CO, SC 43392813.  
vi. ? BURLESON, b. 25 Dec 1927, Avery Co. North Carolina; d. 26 Dec 1927, North Carolina.

More About ? BURLESON:

Fact 1: 25 Dec 1927, Birth Bk 6, Pg 363, Avery Co, NC

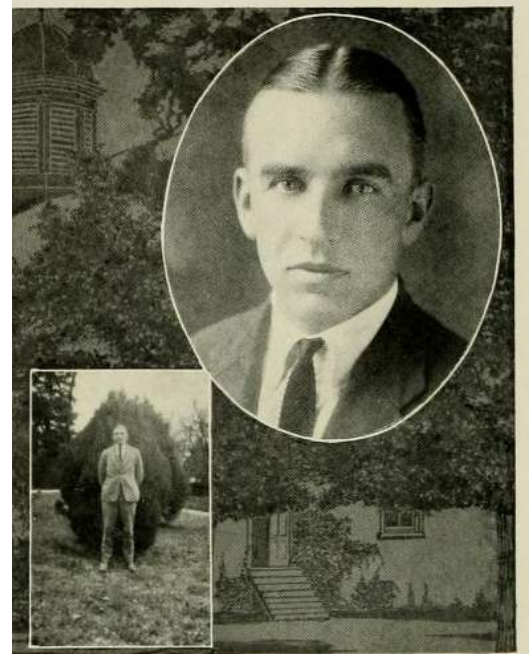
Fact 2: 26 Dec 1927, Death Bk 6, Pg 79, Avery Co. NC

25. vii. LUCY ANN BURLESON, b. 02 Mar 1930, Avery Co. North Carolina.  
26. viii. ALFRED HAMRICK BURLESON, b. 06 Aug 1936, Avery Co. North Carolina.



10. MILTON ENGLISH<sup>10</sup> BURLESON (*ROBERT MILTON<sup>9</sup>, CHARLES WESLEY<sup>8</sup>, THOMAS JEFFERSON<sup>7</sup>, AARON<sup>6</sup>, THOMAS<sup>5</sup>, AARON<sup>4</sup>, JONATHAN<sup>3</sup>, JOHN<sup>2</sup>, EDWARD<sup>1</sup>*) was born 01 Jul 1895 in MITCHELL CO, NC, and died 29 Jan 1990 in SPRUCE PINE, MITCHELL CO, NC 65657304. He married CLAUDINE HARRIS. She was born 27 Mar 1906 in BEDFORD CO, VA, and died 28 Nov 1994 in SPRUCE PINE, MITCHELL CO, NC 65657320.

More About MILTON ENGLISH BURLESON & CLAUDINE HARRIS:  
Burial: SPRUCE PINE MEM CEM, SPRUCE PINE, MITCHELL CO NC



MILTON E. BURLESON

Erwin, Tenn.

*Age, 24; Height, 5 feet 11½ inches; Weight, 185*

*Degree, B.S. Commerce*

Member of the Dialectic Literary Society; Member of the North Carolina Club; Member of 1923 Football Squad.

**B**EHOLD a Tar Heel bred and born. Although "Burlie" gives his present address as Tennessee, Tarhelia has the first claim on him. "Burlie" is one of these sturdy mountaineers that North Carolina so proudly boasts of. In his Freshman year he went out for football and has been seen in uniform every Fall since. This one fact reveals the chief characteristic of this young giant: although he didn't make the first team, he stuck to it, and by this faithful and never-give-up spirit plugged on, taking the knocks and blows that his Alma Mater might revenge herself against her most ancient rival. Men like him have helped to put out the greatest football team in the history of the University. We are proud of "Burlie"; his host of friends attest to the fact. We have only good thoughts of him. May he continue to live his life as we know him at Carolina.



Fact 1: 1900, Mitchel Co. NC Ed 101/13/81

Fact 2: 1910, Mitchel Co. NC Ed 150/15

Fact 3: 1920, Unicoi Co. TN Ed 188/13/93

Fact 4: Buried Spruce Pine Memorial Cem., Mitchel Co., NC

Child of MILTON BURLESON and CLAUDINE HARRIS is:

- i. ELIZABETH ANN<sup>11</sup> BURLESON, b. 26 Sep 1930; d. 01 Jul 2004, 81621828.

More About ELIZABETH ANN BURLESON:  
Burial: SPRUCE PINE MEM CEM, SPRUCE PINE, MITCHELL CO, NC



**11.** OLIVE JANETTE<sup>10</sup> (JANET) BURLESON (*ROBERT MILTON<sup>9</sup>, CHARLES WESLEY<sup>8</sup>, THOMAS JEFFERSON<sup>7</sup>, AARON<sup>6</sup>, THOMAS<sup>5</sup>, AARON<sup>4</sup>, JONATHAN<sup>3</sup>, JOHN<sup>2</sup>, EDWARD<sup>1</sup>*) was born 15 Oct 1897 in North Carolina, and died 18 Mar 1993 in AVERY CO, NC 75837138. She married CLINTON REECE BROOKS. He was born 11 Jul 1925 in PLUMTREE, AVERY CO, NC, and died 01 Jan 1948 in PLUMTREE, AVERY CO, NC 43934163.



More About OLIVE JANETTE BURLESON & CLINTON REECE BROOKS:

Burial: YELLOW MOUNTAIN CEM, PLUMTREE, AVERY CO, NC

Fact 1: 1900, Mitchel Co. NC Ed 101/13/81

Fact 2: 1910, Mitchel Co. NC Ed 150/15

Fact 3: 1920

Child of OLIVE BURLESON and CLINTON BROOKS is:

- i. ALTON M<sup>11</sup> BROOKS, b. 26 Feb 1928, NC; d. 05 May 1997, NEWLAND, AVERY CO, NC 75837371.

**12.** MABEL<sup>10</sup> BURLESON (*ROBERT MILTON<sup>9</sup>, CHARLES WESLEY<sup>8</sup>, THOMAS JEFFERSON<sup>7</sup>, AARON<sup>6</sup>, THOMAS<sup>5</sup>, AARON<sup>4</sup>, JONATHAN<sup>3</sup>, JOHN<sup>2</sup>, EDWARD<sup>1</sup>*) was born 16 Jun 1899 in Toe River, Mitchel Co, North Carolina, and died Mar 1982. She married STANLY HERMAN WHITEHEAD. He was born 05 Jan 1898 in NELSON, VA, and died 18 Oct 1981 in RENO, WASHOE, NEVADA.

More About MABEL BURLESON:

Fact 1: 1900, Mitchel Co. NC Ed 101/13/81

Fact 2: 1910, Mitchel Co. NC Ed 150/15

Fact 3: 1920, Unicoi Co. TN Ed 188/13/93

Fact 4: 16 Jun 1899, Birth Bk 9, Pg 41, Mitchel Co, NC

Children of MABEL BURLESON and STANLY WHITEHEAD are:

- i. EVELYN<sup>11</sup> WHITEHEAD, b. 1924.
- ii. FRANCES A WHITEHEAD, b. 1925.

**13.** MD JUSTIN M. DR<sup>10</sup> BURLESON (*ROBERT MILTON<sup>9</sup>, CHARLES WESLEY<sup>8</sup>, THOMAS JEFFERSON<sup>7</sup>, AARON<sup>6</sup>, THOMAS<sup>5</sup>, AARON<sup>4</sup>, JONATHAN<sup>3</sup>, JOHN<sup>2</sup>, EDWARD<sup>1</sup>*) was born 29 Jan 1902 in North Carolina, and died Feb 1977 in WASHINGTON, TN. He married TINY RAY BROWN 14 May 1928 in UNICOI, TN.

More About MD JUSTIN M. DR BURLESON:

Fact 1: 1910, Mitchel Co. NC Ed 150/15

Fact 2: 1920, Unicoi Co. TN Ed 188/13/93

More About JUSTIN BURLESON and TINY BROWN:

Marriage: 14 May 1928, UNICOI, TN

Child of JUSTIN BURLESON and TINY BROWN is:

27. i. ALVIN B (AL)<sup>11</sup> BURLESON, b. 30 Nov 1935, JOHNSON CITY, WASHINGTON CO, TN; d. 27 Jan 2000, HUNTSVILLE, MADISON CO, AL 59644723.

**14.** OLIVE ENGLISH<sup>10</sup> BROWN (*TUPPIE LEANNA<sup>9</sup> BURLESON, CHARLES WESLEY<sup>8</sup>, THOMAS JEFFERSON<sup>7</sup>, AARON<sup>6</sup>, THOMAS<sup>5</sup>, AARON<sup>4</sup>, JONATHAN<sup>3</sup>, JOHN<sup>2</sup>, EDWARD<sup>1</sup>*) was born 30 Sep 1903, and died 21 May 1995 in 12235600. She married HOYT BLACKWELL. He was born 20 Sep 1890, and died 08 Nov 1988 in 12235593.



More About OLIVE ENGLISH BROWN & HOYT BLACKWELL:  
Burial: MARS HILL CEM, MARS HILL, MADISON CO, NC



HOYT BLACKWELL  
PRESIDENT MARS HILL COLLEGE  
1938 - 1966



Child of OLIVE BROWN and HOYT BLACKWELL is:

i. ERIC<sup>11</sup> BLACKWELL.

**15.** CHARLES WESLEY<sup>10</sup> BURLESON (*SAMUEL LEANDER<sup>9</sup>, CHARLES WESLEY<sup>8</sup>, THOMAS JEFFERSON<sup>7</sup>, AARON<sup>6</sup>, THOMAS<sup>5</sup>, AARON<sup>4</sup>, JONATHAN<sup>3</sup>, JOHN<sup>2</sup>, EDWARD<sup>1</sup>*) was born 30 Oct 1908 in MITCHELL CO, NC, and died 09 Apr 1941 in Plumtree, Avery Co., NC 60302231. He married DOROTHY HARRIETT HUGHES 08 Dec 1929 in Avery Co. North Carolina. She was born 20 Oct 1910.

More About CHARLES WESLEY BURLESON:

Burial: YELLOW MOUNTAIN CEM, PLUMTREE, AVERY CO, NC

Fact 1: 09 Apr 1941, Death Bk 19, Pg 129, Mitchel Co. NC

Fact 2: Buried Yellow Mt. Cem., Plumtree, NC

Fact 3: Second wife Edna Carpenter per one source



More About CHARLES BURLESON and DOROTHY HUGHES:

Marriage: 08 Dec 1929, Avery Co. North Carolina

Children of CHARLES BURLESON and DOROTHY HUGHES are:

28. i. LILA ANN<sup>11</sup> BURLESON, b. 31 Oct 1930, Avery Co., North Carolina; d. 28 May 1998, NEWLAND, AVERY CO, NC.
- ii. CLARA BURLESON, m. DICKSON.

**16.** VANCE MEBANE<sup>10</sup> BROWN (*JODIE LEE<sup>9</sup> BURLESON, CHARLES WESLEY<sup>8</sup>, THOMAS JEFFERSON<sup>7</sup>, AARON<sup>6</sup>, THOMAS<sup>5</sup>, AARON<sup>4</sup>, JONATHAN<sup>3</sup>, JOHN<sup>2</sup>, EDWARD<sup>1</sup>*) was born 11 Jun 1914, and died 22 Jan 2006 in UNION, UNION CO, SC 13237044. He married ANNA FAULHABER. She was born 31 Aug 1929 in ROCHESTER, MONROE CO, NY, and died 23 May 2013 in UNION, UNION CO, SC 111326179.

Notes for VANCE MEBANE BROWN:

Vance M. Brown Sr., 91, husband of Anna (Faulhaber) Brown of Union, died Sunday, January 22, 2006 at Wallace Thomson Hospital.

Surviving in addition to his wife are a daughter, Balencia B. Whitaker of Statesville, NC; two sons Howard Brown of Newland, NC, and John W. Brown of Shelby, NC, and a number of grandchildren; great-grandchildren and great-great-grandchildren.

Mr. Brown was predeceased by a son, Vance M. Brown Jr.

Graveside services were held at 1:00 p.m. Wednesday, Jan. 25, 2006, at Riverside Cemetery in Asheville, NC.

The family received friends after the graveside service at the cemetery.

Memorials could be made to Union County Meals on Wheels, c/o Monte Lancaster, Arthur State Bank, Union, S.C. 29379.

S. R. Holcombe Funeral Home  
Union, SC



More About VANCE MEBANE BROWN & ANNA FAULHABER:

Burial: RIVERSIDE CEM, ASHEVILLE, BUNCOMBE CO, NC

Notes for ANNA FAULHABER:

Union-Mrs. Anna Faulhaber Brown, 83 widow of Vance M. Brown Sr. of 217 Hummingbird Lane, Union, passed away Thursday May 23, 2013 at her home .

Mrs. Brown was born in Rochester Ny, Aug. 31, 1929 and was retired from Graflex, INC. Mrs. Brown attended Second Presbyterian Church in Union, S.C.

She is survived by several nieces and nephews, including a special friend Liz Finnegan of NY and her best friends and caregiver Linda Sorrells of Union, SC

Mrs. Brown was predeceased by her brother and sister and her stepchildren.

Gravside services will be held 2:00PM Saturday, May 25, 2013 at Riverside Cemetery, 35 Birch St. Asheville, N.C.

Children of VANCE BROWN and ANNA FAULHABER are:

- i. BALENCIA<sup>11</sup> BROWN.
- ii. HOWARD BROWN.
- iii. JOHN W BROWN.
29. iv. VANCE MEBANE JR BROWN, b. 26 Oct 1942; d. 26 Apr 1995, 47472679.

**17. BROWN HUGHES<sup>10</sup> BURLESON** (*DAVID PATTERSON<sup>9</sup>, CHARLES WESLEY<sup>8</sup>, THOMAS JEFFERSON<sup>7</sup>, AARON<sup>6</sup>, THOMAS<sup>5</sup>, AARON<sup>4</sup>, JONATHAN<sup>3</sup>, JOHN<sup>2</sup>, EDWARD<sup>1</sup>*) was born 26 Dec 1915 in MITCHELL CO, NC, and died 19 Apr 1964 in SPRUCE PINE, MITCHELL CO, NC 47594497. He married (1) MARY TESS CLARK. He married (2) CATHERINE MURRAY 17 Jul 1937 in Avery Co. North Carolina. She was born Abt. 1916.

More About BROWN HUGHES BURLESON:

Fact 1: 1920, Sullivan Co, TN Ed 179/8/34

Fact 2: 19 Apr 1964, Death Mitchel Co, NC Bk 36, Pg 24A

Fact 3: 23 Apr 1964, Probate Mitchel Co, NC Bk 3, Pg 208

Fact 4: SS# 238-30-4048

More About BROWN BURLESON and CATHERINE MURRAY:

Marriage: 17 Jul 1937, Avery Co. North Carolina

Child of BROWN BURLESON and CATHERINE MURRAY is:

30. i. JACK PATTEN<sup>11</sup> BURLESON, b. 23 Feb 1947, Avery Co. North Carolina.

**18. ELEANORE<sup>10</sup> BURLESON** (*WILLIAM BROWN DR<sup>9</sup>, CHARLES WESLEY<sup>8</sup>, THOMAS JEFFERSON<sup>7</sup>, AARON<sup>6</sup>, THOMAS<sup>5</sup>, AARON<sup>4</sup>, JONATHAN<sup>3</sup>, JOHN<sup>2</sup>, EDWARD<sup>1</sup>*) was born Abt. 1928, and died 16 Sep 1996. She married AL LUNDY.

More About ELEANORE BURLESON:

Fact 1: Buried Yellow Mt. Cem., Plumtree, NC

Children of ELEANORE BURLESON and AL LUNDY are:

- i. MARIAN<sup>11</sup> LUNDY, m. HUTCHENS.
- ii. WILLIAM LUNDY.

**19. EDITH LOUISE<sup>10</sup> BURLESON** (*HENRY<sup>9</sup>, CHARLES WESLEY<sup>8</sup>, THOMAS JEFFERSON<sup>7</sup>, AARON<sup>6</sup>, THOMAS<sup>5</sup>, AARON<sup>4</sup>, JONATHAN<sup>3</sup>, JOHN<sup>2</sup>, EDWARD<sup>1</sup>*) was born 20 Aug 1918 in Plumtree Twp., Avery Co., NC, and died 28 Oct 2006 in 125263049. She married ANGUS VAN DALEN STRONACH 27 Apr 1943 in Avery Co. North Carolina. He was born 25 Sep 1921 in RALEIGH, WAKE CO, NC, and died 01 Jun 2008 in MARION, MCDOWELL CO, NC 125262665.

Notes for EDITH LOUISE BURLESON:

Edith Burleson Stronach

(August 20, 1918 - October 28, 2006)



Mrs. Edith Burleson Stronach, age 88, of Marion, passed away on Saturday, October 28, 2006 at Autumn Care of Marion. A native of Avery County, Edith was born on August 20, 1918 to the late Henry Burleson and Fannie Banner Burleson. She was a member of the First Presbyterian Church of Marion and was retired from the McDowell County School System as a teacher.

Surviving are her husband of 63 years, Angus Stronach; three children, Angela Todd and her husband Bob of Plumtree, Van Stronach of Linville and Fannie Kay Horn and her husband Michael of Lewisville; a sister, Kay Wilkins of Plumtree; a sister-in-law, Sarah Burleson of Bristol, TN; eight grandchildren and seven great grandchildren.

A funeral service will be held on Tuesday, October 31, 2006 at 10:00 a.m. at the First Presbyterian Church of Marion with Revs. Jim Wilken and George Hutchins officiating. The family will receive friends immediately following the service in the Ladies Parlor.

More About EDITH LOUISE BURLESON: Burial: CREMATED

Fact 1: 1920, Avery Co. NC Ed 9/12/15

Fact 2: 20 Aug 1918, Birth Bk 2, Pg 885, Mitchel Co, NC

Notes for ANGUS VAN DALEN STRONACH:

\_ Born September 25, 1921 Angus Van Dalen Stronach grew up in Raleigh, North Carolina. His family moved to Altamont when he was 20, where he met Edith Burleson of Plumtree who would be his partner in life for nearly 60 years.

He was a surveyor for the construction of the Blue Ridge Parkway and the Pentagon in Arlington Virginia. Like so many of the greatest generation, Angus proudly served his country in World War II as a First Lieutenant in the United States Army's 76th Division, 151st Field Artillery Brigade fighting in France and Germany. He received a Purple Heart.

Following the war he returned home and went to work with an uncle in Statesville, where he served that community as president of the Statesville Kiwanis and Chamber of Commerce. In 1961 he moved to Marion where he joined the Marion Oil Company which he bought in 1965. He had the privilege of working with trusted and loyal employees and friends to whom he sold the business in 1983 upon his retirement.

He served as president of the McDowell Chamber of Commerce, President of the McDowell Kiwanis, and Chairman of the Board of the McDowell Hospital and served on the board of trustees of Cannon Memorial Hospital, Lees McCrae College, McDowell Tech and the board of directors of Bank of America in Marion. He also served several terms as a councilman on the Marion City Council. He was also a member, Deacon and Elder of the First Presbyterian Church.

He lived his life as a Christian and servant of God. He was respected for his kindness, honesty, benevolence to his community and church and his devotion to his family, particularly his wife Edith for whom he faithfully cared during her heartbreaking decline with Alzheimer's until her death in 2006.

During the last two years Angus endured a gradual decline in his health which greatly diminished his quality of life and his ability to be part of the community he loved. He was deeply concerned about becoming a burden to his family.

On Sunday morning June 1st he chose to join his beloved wife Edith. He is survived by his two daughters Fanny Kay Stronach and her husband Mike Horn of Lewisville, NC, Angela Todd and her husband Bob of Plumtree, his son Van Stronach and wife Shelly of Linville, sister Lydia Van Horn of Altamont, sister-in-law Kay Wilkins of Plumtree, sister-in-law Sara Burleson of Bristol, TN, 6 grandchildren and 9 great grandchildren.

A remembrance service will be held at the First Presbyterian Church in Marion on Friday, June 6th at 11 a.m. The family will receive friends following the service in the Ladies Parlor of the Church.

More About ANGUS VAN DALEN STRONACH: Burial: CREMATED

Military service: 1ST LT US ARMY 76TH DIV 151ST FIELD ART BRIGADE

More About ANGUS STRONACH and EDITH BURLESON:  
Marriage: 27 Apr 1943, Avery Co. North Carolina

Children of EDITH BURLESON and ANGUS STRONACH are:

- i. ANGELA<sup>11</sup> STRONACH, m. ROBERT (BOB) TODD.
- ii. FANNY KAY STRONACH, m. FRED J. PARHAM.
- iii. VAN STRONACH.

**20.** WILLIAM WESLEY<sup>10</sup> BURLESON (*HENRY<sup>9</sup>, CHARLES WESLEY<sup>8</sup>, THOMAS JEFFERSON<sup>7</sup>, AARON<sup>6</sup>, THOMAS<sup>5</sup>, AARON<sup>4</sup>, JONATHAN<sup>3</sup>, JOHN<sup>2</sup>, EDWARD<sup>1</sup>*) was born 03 Jul 1923 in Avery Co. North Carolina, and died 02 Apr 1999. He married SARA BARNES STONE 21 Oct 1949 in DURHAM, NC. She was born 1925.

More About WILLIAM WESLEY BURLESON:  
Fact 1: 03 Jul 1923, Birth Bk 3, Pg 1030, Avery Co, NC  
Military service: US ARMY WWII

More About WILLIAM BURLESON and SARA STONE:  
Marriage: 21 Oct 1949, DURHAM, NC

Children of WILLIAM BURLESON and SARA STONE are:

- i. LYNN C.<sup>11</sup> BURLESON, m. CHARLES HODGES.
- ii. MD JAMES BURLESON.
- iii. WILLIAM WESLEY BURLESON.

**21.** VANCE BROWN<sup>10</sup> BURLESON (*FRANK<sup>9</sup>, CHARLES WESLEY<sup>8</sup>, THOMAS JEFFERSON<sup>7</sup>, AARON<sup>6</sup>, THOMAS<sup>5</sup>, AARON<sup>4</sup>, JONATHAN<sup>3</sup>, JOHN<sup>2</sup>, EDWARD<sup>1</sup>*) was born 20 Jun 1912 in AVERY CO, NC, and died 31 May 2002 in NC 47524762. He married HELEN HUGHES. She was born 12 Oct 1914 in AVERY CO, NC, and died Nov 1979 in 47524766.

More About VANCE BROWN BURLESON & HELEN HUGHES:  
Burial: HUGHES CEM, HUGHES, AVERY CO, NC

More About VANCE BURLESON and  
HELEN HUGHES:  
Marriage: 25 Aug 1934, Mitchel Co,  
North Carolina

Child of VANCE BURLESON and  
HELEN HUGHES is:

- i. VANCE K.<sup>11</sup> BURLESON, b. 10  
Oct 1937, Avery Co. North  
Carolina.

More About VANCE K.  
BURLESON:  
Fact 1: 10 Oct 1937, Birth Bk  
15, Pg 458, Avery Co, NC



**22.** VIRGINIA<sup>10</sup> BURLESON (*FRANK<sup>9</sup>, CHARLES WESLEY<sup>8</sup>, THOMAS JEFFERSON<sup>7</sup>, AARON<sup>6</sup>, THOMAS<sup>5</sup>, AARON<sup>4</sup>, JONATHAN<sup>3</sup>, JOHN<sup>2</sup>, EDWARD<sup>1</sup>*) was born 01 Jul 1915 in Plumtree, Avery Co., North Carolina, and died 17 May 1989 in 87012554. She married LEWIS RICH RYAN 19 Aug 1934 in Mitchel Co, North Carolina. He was born 08 Mar 1912, and died 26 May 1978 in 87012531.

More About VIRGINIA BURLESON & LEWIS RICH RYAN:  
Burial: CHESTER MEM GARDENS, CHESTER, CHESTER CO, SC

Fact 1: 1920

Fact 2: 01 Jul 1916, Birth Bk 1, Pg 1621, Avery Co., NC

More About LEWIS RYAN and VIRGINIA BURLESON:

Marriage: 19 Aug 1934, Mitchel Co, North Carolina

Children of VIRGINIA BURLESON and LEWIS RYAN are:

- i. SANDRA<sup>11</sup> RYAN, m. WELDON.
- ii. LEWIS RICH RYAN, b. 26 Sep 1935.
- iii. LETITIA RYAN, b. 16 Aug 1937.



**23.** FRANK RICHARD<sup>10</sup> BURLESON (*FRANK<sup>9</sup>, CHARLES WESLEY<sup>8</sup>, THOMAS JEFFERSON<sup>7</sup>, AARON<sup>6</sup>, THOMAS<sup>5</sup>, AARON<sup>4</sup>, JONATHAN<sup>3</sup>, JOHN<sup>2</sup>, EDWARD<sup>1</sup>*) was born 04 Jul 1918 in Toe River, Avery Co, North Carolina, and died 31 Oct 2000 in Linville Twp., Avery Co., NC. He married DORADA ALDRIDGE 03 Feb 1940, daughter of BURT ALDRIDGE and IDA MCKINNEY. She was born 1919.

More About FRANK RICHARD BURLESON:

Fact 1: 1920, Avery Co. NC Ed 9/12/11

Fact 2: 04 Jul 1918, Birth Bk 2, Pg 1315

Fact 3: 04 Jul 1919, Birth per one source

Fact 4: Family related to AA612382 & AA6116

More About DORADA ALDRIDGE:

Fact 1: 1920

Fact 2: Family related to AA6116 & AA612382

More About FRANK BURLESON and DORADA ALDRIDGE:

Marriage: 03 Feb 1940

Children of FRANK BURLESON and DORADA ALDRIDGE are:

- i. EDNA<sup>11</sup> BURLESON, m. WEBB.
31. ii. CHRISTINE BURLESON, b. 13 May 1946.
- iii. BRANTLY BURLESON, b. 29 Sep 1956.
- iv. FRANK BURLESON, b. 29 Sep 1956, Burnsville, Avery Co., North Carolina.

More About FRANK BURLESON:

Fact 1: 29 Sep 1956, Birth Bk 33 Pg 456, Avery Co., NC



**24. JAMES RUSSELL<sup>10</sup> BURLESON** (*FRANK<sup>9</sup>, CHARLES WESLEY<sup>8</sup>, THOMAS JEFFERSON<sup>7</sup>, AARON<sup>6</sup>, THOMAS<sup>5</sup>, AARON<sup>4</sup>, JONATHAN<sup>3</sup>, JOHN<sup>2</sup>, EDWARD<sup>1</sup>*) was born 13 Jul 1923 in Toe River, Avery Co, North Carolina, and died 27 Nov 2008 in WHITE ROCK, RICHLAND CO, SC 43392813. He married MARGARET LILLIAN WALLEN. She was born 26 Jul 1922, and died 29 Apr 2004.

Notes for JAMES RUSSELL BURLESON:

James Russell Burleson

White Rock, S.C. -- James Russell Burleson, 85, died Thursday, Nov. 27, 2008, at the Lowman Nursing and Rehabilitation Center in White Rock.

Born July 13, 1923, in Plumtree, N.C., he was the son of Frank and Birdie Hamerick Burleson. Jim was a decorated Army veteran, having served during WWII as a combat infantry sergeant in the Battle of the Bulge in France and Germany.

Following his honorable discharge from the Army in 1945, Jim attended the University of North Carolina and graduated from Wake Forest College in North Carolina in 1949 with a Bachelor of Science degree in biology and chemistry.

He began his career as a high school science teacher in Goldsboro, N.C. In 1950 he moved with his family to Aiken and began work as a laboratory supervisor at the Savannah River Plant for the Atomic Energy Commission, retiring in 1981.

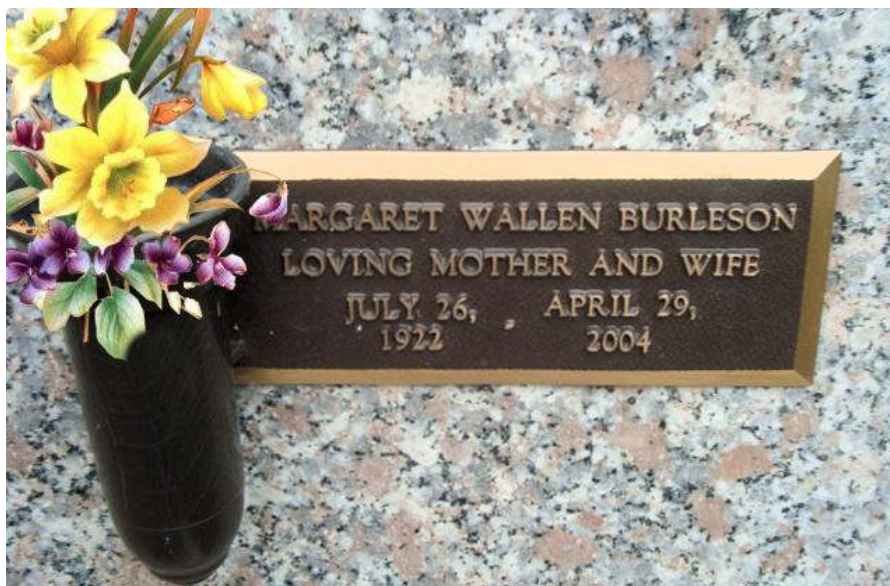
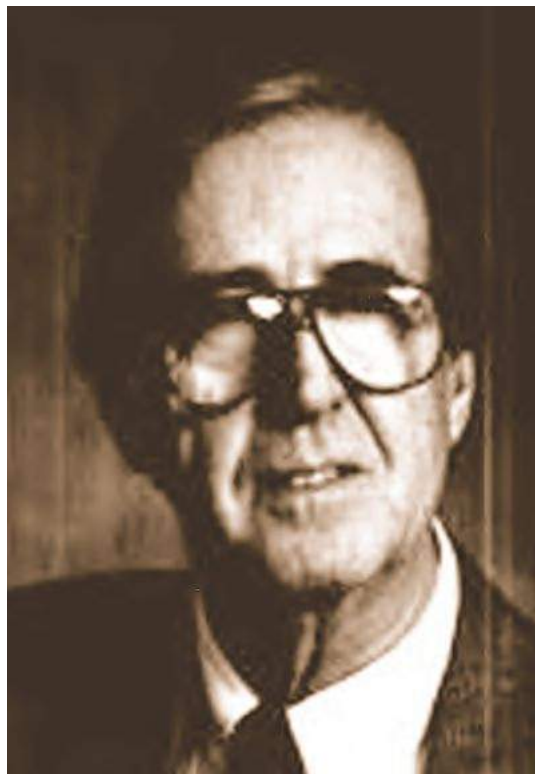
Throughout his life, Jim's passions were first his family and his deep love for nature. He was an avid saltwater fisherman, tournament-level tennis player and later in life, a golfer. During his retirement years, Jim loved to fish and walk on the beach, offering treats to every dog he met! He loved and appreciated music, art, poetry and the beauty of everyday life.

Jim married the late Margaret L. Wallen in Little Rock, Ark., in 1942, prior to his overseas deployment.

He was preceded in death by his parents, two brothers, Frank Richard Burleson and Vance Burleson, and a sister, Virginia Ryan. He is survived by a sister, Lou Martin of Plumtree, N.C.; a brother, Al Burleson of West Columbia; three daughters, Sandra Burleson (Tai Sugimoto) of Wadmalaw Island, Anna Hilton (Carl) of Mount Pleasant and Marilou Burleson (Tom Levine) of Annapolis, Md.; a son, Russ Burleson (Wanda) of Chapin, nine grandchildren and three great-grandchildren.

Services will be held at 2 p.m. on Saturday, Nov. 29, 2008, at the chapel in the Daily Life Center at The Heritage at Lowman in White Rock. Friends will be received following the service. Caughman-Harman Funeral Home, Chapin Chapel, is in charge of the arrangements.

The family would like to express their heartfelt thanks to the nurses and staff of the Nursing and Rehabilitation Center at the Heritage at Lowman in White Rock.



JAMES RUSSELL BURLESON & MARGARET LILLIAN WALLEN:  
Burial: MT PLEASANT MEM GARDENS, MT PLEASANT,  
CHARLESTON CO, SC

Fact 1: 13 Jul 1923, Birth Bk 3, Pg 1032, Avery Co, NC

Children of JAMES BURLESON and MARGARET WALLEN are:

- i. SANDRA KAY<sup>11</sup> BURLESON, b. 15 Sep 1947, Avery Co. North Carolina; m. MICHAEL FRENCH.  
More About SANDRA KAY BURLESON:  
Fact 1: 15 Sep 1947, Birth Bk 25, Pg 435?, Avery Co, NC
32. ii. JAMES RUSSELL BURLESON, b. 06 May 1950, Avery Co. North Carolina.
- iii. ANNA BURLESON, b. 16 Feb 1952; m. ERIC OYLER.
33. iv. MARILOU BURLESON, b. 29 Nov 1957.

**25.** LUCY ANN<sup>10</sup> BURLESON (*FRANK<sup>9</sup>, CHARLES WESLEY<sup>8</sup>, THOMAS JEFFERSON<sup>7</sup>, AARON<sup>6</sup>, THOMAS<sup>5</sup>, AARON<sup>4</sup>, JONATHAN<sup>3</sup>, JOHN<sup>2</sup>, EDWARD<sup>1</sup>*) was born 02 Mar 1930 in Avery Co. North Carolina. She married ROBERT LEE MARTIN 02 Sep 1950. He was born 14 May 1921 in Winston-Salem, North Carolina, and died 03 Mar 2013 in NC 106291209.

More About LUCY ANN BURLESON: Fact 1: 02 Mar 1930, Birth Bk 8, Pg 653, Avery Co, NC

Notes for ROBERT LEE MARTIN:

Robert Lee Martin, 91, departed his blessed life Sunday, March 3, 2013, at home with his family.

He was born on May 14, 1921, in Winston Salem, the son of William Henry Martin and Jenny Estelle Sledge.

He leaves to cherish his memories, his wife of 63 years, Lou Burleson; children, Bill, Susy, Melynda, Cindy and Robby; sister, Mildred Butt of McLean, Va.; 14 grandchildren, nine great-grandchildren, relatives and friends.

Martin was a man with a profound faith, a curious mind, and a happy heart. As a member of "the greatest generation," he served his country in the U.S. Army Air Corps during World War II. He attended Appalachian State Teachers' College on the GI Bill, got his Master's there, and later took additional courses at George Washington University. He was a teacher and administrator in schools from Kinshasa in the Congo to Midway Island in the Pacific, as well as in the outskirts of our nation's capital and in Winston-Salem. He also worked for the Bureau of Naval Personnel in Washington as Assistant Director of Education. He came to Crossnore in the early 70's and worked as Executive Director of The Crossnore School.



More About ROBERT LEE MARTIN:

Burial: CROSSNORE PRES CH CEM, CROSSNORE, AVERY CO, NC

Military service: SGT US ARMY AIR FORCES WWII

More About ROBERT MARTIN and LUCY BURLESON:

Marriage: 02 Sep 1950

Children of LUCY BURLESON and ROBERT MARTIN are:

34. i. WILLIAM FRANK<sup>11</sup> MARTIN, b. 31 Dec 1952, North Carolina.
35. ii. JENNY SUZANNE MARTIN, b. 09 Feb 1955, North Carolina.
36. iii. MELYNDA LOU MARTIN, b. 01 Apr 1958, Midway Island.
- iv. CYNTHIA MERI MARTIN, b. 07 Feb 1962, Washington, D.C..
- v. ROBERT SLEDGE MARTIN, b. 04 Oct 1967, Washington, D.C.; m. MICHELLE THRAILKILL.

**26.** ALFRED HAMRICK<sup>10</sup> BURLESON (*FRANK<sup>9</sup>, CHARLES WESLEY<sup>8</sup>, THOMAS JEFFERSON<sup>7</sup>, AARON<sup>6</sup>, THOMAS<sup>5</sup>, AARON<sup>4</sup>, JONATHAN<sup>3</sup>, JOHN<sup>2</sup>, EDWARD<sup>1</sup>*) was born 06 Aug 1936 in Avery Co. North Carolina. He married ELAINE BOWMAN.

More About ALFRED HAMRICK BURLESON:

Fact 1: 16 Aug 1936, Birth Bk 14, Pg 433, Avery Co, NC

Children of ALFRED BURLESON and ELAINE BOWMAN are:

- i. KIM<sup>11</sup> BURLESON.
- ii. PATRICIA BURLESON, b. 1959.

*Generation No. 4*

**27.** ALVIN B (AL)<sup>11</sup> BURLESON (*JUSTIN M. DR<sup>10</sup>, ROBERT MILTON<sup>9</sup>, CHARLES WESLEY<sup>8</sup>, THOMAS JEFFERSON<sup>7</sup>, AARON<sup>6</sup>, THOMAS<sup>5</sup>, AARON<sup>4</sup>, JONATHAN<sup>3</sup>, JOHN<sup>2</sup>, EDWARD<sup>1</sup>*) was born 30 Nov 1935 in JOHNSON CITY, WASHINGTON CO, TN, and died 27 Jan 2000 in HUNTSVILLE, MADISON CO, AL 59644723. He married ELIZABETH ANN SANDERS. She was born 08 Jan 1936, and died 02 Mar 2014 in HUNTSVILLE, MADISON CO, AL 125887021.

More About ALVIN B (AL) BURLESON & ELIZABETH ANN SANDERS:

Burial: VALHALLA MEM GARDENS, HUNTSVILLE, MADISON CO, AL



Notes for ALVIN B (AL) BURLESON:

Alvin B. 'Al' Burleson

64, civil service retiree

HUNTSVILLE -- Funeral for Alvin B. "Al" Burleson, 64, of Huntsville will be Sunday at 2 p.m. at Valhalla Funeral Home with the Rev. Byron White officiating.

Burial will be in Valhalla Memory Gardens. The family will receive friends tonight from 6 to 9 at the funeral home.

Mr. Burleson died Thursday, Jan. 27, 2000, at home. He was born Nov. 30, 1935, in Johnson City, Tenn. A resident of Huntsville for 42 years, he was a member of Epworth United Methodist Church and retired after 35 years as a civil service employee.

He is survived by his wife, Ann Burleson; one son, Tim A. Burleson of Decatur; one daughter, Jamie Cook of Huntsville; one brother, Robert Burleson of Santa Clarita, Calif.; two sisters, Justine Rosser of Charlotte, N.C., and Martha Miley of Jacksonville, Fla.; and four grandchildren.

Memorials may be made to Epworth United Methodist Church building fund or to Hospice Family Care in Huntsville.

Notes for ELIZABETH ANN SANDERS:

Elizabeth Ann Burleson departed this life on Mar. 2, 2014 in Huntsville, AL. She is preceded in death by her husband of 43 years, Al Burleson and grandson, Austin. Mrs. Burleson is survived by her son, Tim Burleson; daughter, Jamie Cook and five grandchildren. Visitation will be at Valhalla Funeral Home on Thursday, Mar. 6th from 3:00 PM - 7:00 PM, with funeral services on Friday, Mar. 7th at 11:00 AM. Rev. Tim Koscheski will be officiating. Interment will follow in Valhalla Memory Gardens.

Published in The Huntsville Times from Mar. 4 to Mar. 5, 2014

Children of ALVIN BURLESON and ELIZABETH ANN are:

37. i. TIM A<sup>12</sup> BURLESON, b. 22 Jan 1958; d. 19 Jan 2018, LAWRENCE CO, AL 186811977.
38. ii. JAMIE BURLESON.

**28. LILA ANN<sup>11</sup> BURLESON** (*CHARLES WESLEY<sup>10</sup>, SAMUEL LEANDER<sup>9</sup>, CHARLES WESLEY<sup>8</sup>, THOMAS JEFFERSON<sup>7</sup>, AARON<sup>6</sup>, THOMAS<sup>5</sup>, AARON<sup>4</sup>, JONATHAN<sup>3</sup>, JOHN<sup>2</sup>, EDWARD<sup>1</sup>*) was born 31 Oct 1930 in Avery Co., North Carolina, and died 28 May 1998 in NEWLAND, AVERY CO, NC. She married DAVID LINNIE III BECK. He was born 22 Dec 1927 in WISE, WISE CO, VA, and died 26 Nov 1984 in Plumtree Twp., Avery Co., NC 60304972.



More About LILA ANN BURLESON & DAVID LINNIE III BECK:

Burial: YELLOW MOUNTAIN CEM, PLUMTREE, AVERY CO, NC

Fact 2: 31 Oct 1931, Birth Bk 8 Pg 245, Mitchel Co., NC

Military service: CPL US MARINE CORPS KOREA

Children of LILA BURLESON and DAVID BECK are:

- i. LISA<sup>12</sup> BECK, m. BERRY.
- ii. DAVID BECK.
- iii. THOMAS BECK.

**29. VANCE MEBANE JR<sup>11</sup> BROWN** (*VANCE MEBANE<sup>10</sup>, JODIE LEE<sup>9</sup> BURLESON, CHARLES WESLEY<sup>8</sup>, THOMAS JEFFERSON<sup>7</sup>, AARON<sup>6</sup>, THOMAS<sup>5</sup>, AARON<sup>4</sup>, JONATHAN<sup>3</sup>, JOHN<sup>2</sup>, EDWARD<sup>1</sup>*) was born 26 Oct 1942, and died 26 Apr 1995 in 47472679.

Child of VANCE MEBANE JR BROWN is:

- i. JODIE LEE<sup>12</sup> BROWN, b. 19 Jan 1967; d. 21 Aug 1967.

More About JODIE LEE BROWN:  
Burial: BENFIELD CEM, CROSSNORE, AVERY CO, NC



More About VANCE MEBANE JR BROWN:  
Burial: BENFIELD CEM, CROSSNORE, AVERY CO, NC

**30. JACK PATTEN<sup>11</sup> BURLESON** (*BROWN HUGHES<sup>10</sup>, DAVID PATTERSON<sup>9</sup>, CHARLES WESLEY<sup>8</sup>, THOMAS JEFFERSON<sup>7</sup>, AARON<sup>6</sup>, THOMAS<sup>5</sup>, AARON<sup>4</sup>, JONATHAN<sup>3</sup>, JOHN<sup>2</sup>, EDWARD<sup>1</sup>*) was born 23 Feb 1947 in Avery Co. North Carolina. He married BEVERLY VANCE.

More About JACK PATTEN BURLESON:  
Fact 1: 23 Feb 1947, Birth Bk 25, Pg 6, Avery Co, NC

Child of JACK BURLESON and BEVERLY VANCE is:

- i. OLIVIA<sup>12</sup> BURLESON.

**31. CHRISTINE<sup>11</sup> BURLESON** (*FRANK RICHARD<sup>10</sup>, FRANK<sup>9</sup>, CHARLES WESLEY<sup>8</sup>, THOMAS JEFFERSON<sup>7</sup>, AARON<sup>6</sup>, THOMAS<sup>5</sup>, AARON<sup>4</sup>, JONATHAN<sup>3</sup>, JOHN<sup>2</sup>, EDWARD<sup>1</sup>*) was born 13 May 1946. She married PATTERSON.

Children of CHRISTINE BURLESON and PATTERSON are:

- i. MARK<sup>12</sup> PATTERSON.
- ii. ELISHA PATTERSON.

**32. JAMES RUSSELL<sup>11</sup> BURLESON** (*JAMES RUSSELL<sup>10</sup>, FRANK<sup>9</sup>, CHARLES WESLEY<sup>8</sup>, THOMAS JEFFERSON<sup>7</sup>, AARON<sup>6</sup>, THOMAS<sup>5</sup>, AARON<sup>4</sup>, JONATHAN<sup>3</sup>, JOHN<sup>2</sup>, EDWARD<sup>1</sup>*) was born 06 May 1950 in Avery Co. North Carolina. He married WANDA USLIER.

More About JAMES RUSSELL BURLESON:  
Fact 1: 06 May 1950, Avery Co. NC Ed 9/12/11

Children of JAMES BURLESON and WANDA USLIER are:

- i. KELLY<sup>12</sup> BURLESON, b. 07 Dec 1971.

ii. MATTHEW BURLESON, b. 26 Apr 1974.

**33.** MARILOU<sup>11</sup> BURLESON (*JAMES RUSSELL<sup>10</sup>, FRANK<sup>9</sup>, CHARLES WESLEY<sup>8</sup>, THOMAS JEFFERSON<sup>7</sup>, AARON<sup>6</sup>, THOMAS<sup>5</sup>, AARON<sup>4</sup>, JONATHAN<sup>3</sup>, JOHN<sup>2</sup>, EDWARD<sup>1</sup>*) was born 29 Nov 1957. She married DONALD BAKER.

Child of MARILOU BURLESON and DONALD BAKER is:

i. ERIC<sup>12</sup> BAKER, b. 10 Sep 1976.

**34.** WILLIAM FRANK<sup>11</sup> MARTIN (*LUCY ANN<sup>10</sup> BURLESON, FRANK<sup>9</sup>, CHARLES WESLEY<sup>8</sup>, THOMAS JEFFERSON<sup>7</sup>, AARON<sup>6</sup>, THOMAS<sup>5</sup>, AARON<sup>4</sup>, JONATHAN<sup>3</sup>, JOHN<sup>2</sup>, EDWARD<sup>1</sup>*) was born 31 Dec 1952 in North Carolina. He married MASON SMART.

Children of WILLIAM MARTIN and MASON SMART are:

- i. AMELIA<sup>12</sup> MARTIN.
- ii. CHRISTOPHER MARTIN.
- iii. MADELINE MARTIN.
- iv. VIRGINIA MARTIN.
- v. MARION MARTIN.

**35.** JENNY SUZANNE<sup>11</sup> MARTIN (*LUCY ANN<sup>10</sup> BURLESON, FRANK<sup>9</sup>, CHARLES WESLEY<sup>8</sup>, THOMAS JEFFERSON<sup>7</sup>, AARON<sup>6</sup>, THOMAS<sup>5</sup>, AARON<sup>4</sup>, JONATHAN<sup>3</sup>, JOHN<sup>2</sup>, EDWARD<sup>1</sup>*) was born 09 Feb 1955 in North Carolina. She married MIKE BIDDIX.

Children of JENNY MARTIN and MIKE BIDDIX are:

- i. CHRISTY<sup>12</sup> BIDDIX.
- ii. TERRANCE BIDDIX.
- iii. BRANDON BIDDIX.

**36.** MELYNDA LOU<sup>11</sup> MARTIN (*LUCY ANN<sup>10</sup> BURLESON, FRANK<sup>9</sup>, CHARLES WESLEY<sup>8</sup>, THOMAS JEFFERSON<sup>7</sup>, AARON<sup>6</sup>, THOMAS<sup>5</sup>, AARON<sup>4</sup>, JONATHAN<sup>3</sup>, JOHN<sup>2</sup>, EDWARD<sup>1</sup>*) was born 01 Apr 1958 in Midway Island. She married JAMES PERRIN.

Child of MELYNDA MARTIN and JAMES PERRIN is:

i. PRESTON<sup>12</sup> PERRIN.

#### *Generation No. 5*

**37.** TIM A<sup>12</sup> BURLESON (*ALVIN B (AL)<sup>11</sup>, JUSTIN M. DR<sup>10</sup>, ROBERT MILTON<sup>9</sup>, CHARLES WESLEY<sup>8</sup>, THOMAS JEFFERSON<sup>7</sup>, AARON<sup>6</sup>, THOMAS<sup>5</sup>, AARON<sup>4</sup>, JONATHAN<sup>3</sup>, JOHN<sup>2</sup>, EDWARD<sup>1</sup>*) was born 22 Jan 1958, and died 19 Jan 2018 in LAWRENCE CO, AL 186811977.

Notes for TIM A BURLESON:

Valhalla Funeral Home Obituary

Timothy Alvin Burleson, 58 of Hillsboro, AL passed away on Friday, January 19, 2018. A Visitation will be held at Valhalla Funeral Home on Wednesday, January 24th from 2:00pm until 3:00pm. A Private Graveside Service will follow at Valhalla Memory Gardens with Police Honors.

Timothy Alvin Burleson, 58 of Hillsboro, Alabama passed away on Friday, January 19, 2018. Tim was born on June 22, 1959 in Decatur, Alabama.

Tim attended Lee High School in Huntsville, AL where he graduated in 1978. He then attended business school at East Tennessee State University where he was in Phi Kappa Alpha Fraternity. He received his Law

Enforcement Certificate from Jacksonville State University in 1981, graduating third in his class. He began his police career with the City of Madison as a patrolman and in 1982 he became a police officer with Decatur City. While serving Decatur he worked as a patrolman, in the traffic division, as a D.A.R.E officer, and in the A.C.E.S. program. Tim retired from Decatur City in 2006 after 24 years of dedicated service. Tim moved to Greenville, Alabama to enjoy retired life hunting and fishing. He came out of retirement in 2007 to work for the Greenville Police Department. After returning to North Alabama he decided to retire yet again, working on occasion as a security guard in various locations. Tim can be remembered as an avid outdoorsman, a man with a great sense of humor, and through the testament of the two beautiful and successful daughters he leaves behind.

Mr. Burleson was preceded in death by his father, Alvin B. Burleson and mother Elizabeth Ann Burleson.

He is survived by two beautiful and successful daughters, Kristin Burleson and Grace Burleson. Kristin has served in the U.S. Navy as an Air Traffic Controller for the past 6 years. In that time, she has quickly advanced in rank and received numerous awards, most recently the Navy Achievement Medal. Grace currently



attends Decatur High School where she is an honor student, the Vice President of Delta Omega Sorority, and she is also an active member of First Baptist Church of Decatur. He is also survived by one sister, Jamie Cook, of Harvest Alabama and her children Tyler, Breann, and Megan.

You may visit with the family on Wednesday, January 24, 2018 at Valhalla Funeral Home from 2:00pm until 3:00pm. A private Graveside Service, with Police Honors will follow in Valhalla Memory Gardens, David Varner and Caleb Farrow officiating. In lieu of flowers, please consider making a donation to your favorite charity. Please sign his guest registry at [www.valhallafunerals.com](http://www.valhallafunerals.com).

More About TIM A BURLESON:

Burial: VALHALLA MEM GARDENS, HUNTSVILLE, MADISON CO, AL

Children of TIM A BURLESON are:

- i. KRISTIN<sup>13</sup> BURLESON.
- ii. GRACE BURLESON.

**38. JAMIE<sup>12</sup> BURLESON (ALVIN B (AL)<sup>11</sup>, JUSTIN M. DR<sup>10</sup>, ROBERT MILTON<sup>9</sup>, CHARLES WESLEY<sup>8</sup>, THOMAS JEFFERSON<sup>7</sup>, AARON<sup>6</sup>, THOMAS<sup>5</sup>, AARON<sup>4</sup>, JONATHAN<sup>3</sup>, JOHN<sup>2</sup>, EDWARD<sup>1</sup>)** She married COOK.

Children of JAMIE BURLESON and COOK are:

- i. TYLER<sup>13</sup> COOK.
- ii. BREANN COOK.
- iii. MEGAN COOK.

---

**Husband: AARON BURLESON**

---

Born: Bef. 1725 in: NJ  
Married: in:  
Died: Bet. 16 Nov 1781 - May 1982 in: WASHINGTON CO, TN (PAGE 87 BFB)  
Burial:  
Father: JONATHAN BURLESON  
Mother:  
Other Spouses:

---

**Wife: RACHEL**

---

Born: in:  
Died: in:  
Burial:  
Father:  
Mother:  
Other Spouses:

---

**CHILDREN**

---

1 M	Name: AARON JR BURLESON Born: 1750 in: Died: 1785 in: Burial: Married: in: Spouse: VOLLEY HOGAN
2 F	Name: ABEGAIL BURLESON Born: in: Married: in: Died: in: Burial: Spouse:
3 F	Name: ELIZABETH BURLESON Born: in: Married: in: Died: in: Burial: Spouse:
4 M	Name: JONATHAN BURLESON Born: 1767 in: Died: in: Burial: Married: in: Spouse: MARGARET PULLIAM
5 F	Name: MARY BURLESON Born: in: Died: in: Burial: Married: in: Spouse: ALLARD
6 F	Name: NANCY BURLESON Born: in: Married: in: Died: in: Burial: Spouse:
7 F	Name: RACHAEL BURLESON Born: in: Married: in: Died: in:



7 F	Burial: Spouse:		
8 F	Name: RHODA BURLESON Born: Married: Died: Burial: Spouse:	in: in: in:	
9 F	Name: SARAH BURLESON Born: Married: Died: Burial: Spouse:	in: in: in:	
10 M	Name: <b>THOMAS BURLESON</b> Born: 1746 Died: 1825 Burial: Married: Spouse: Margaret Greene	in: in:	
11 M	Name: JOHN BURLESON Born: 1767 Died: 1824 Burial: Married: Spouse: MARY ABIGAIL ADAIR	in: NC in: AL in:	
12 M	Name: JOSEPH (JOE) BURLESON Born: 01 Feb 1770 Died: 02 Aug 1849 Burial: Married: 28 Feb 1790 Spouse: Nancy Gage Married: 15 Feb 1815 Spouse: ELIZABETH AYLOR	in: RUTHERFORD CO, NC in: SMITHVILLE, Bastrop, TX 7253729 in: Old Burleson Cemetery, Smithfield, BASTROP CO, TX in: in: MADISON CO, AL	
13 M	Name: JAMES (CAPT) BURLESON Born: 04 May 1775 Died: 03 Jan 1836 Burial: Married: Spouse: MARY (POLLY) RANDOLPH BUCHANAN Married: 24 Dec 1791 Spouse: ELIZABETH SHIPMAN	in: WASHINGTON CO, NC (NOW TN) in: BASTROP CO, TX in: in: RUTERFORD CO, NC	
14	Name: Born: Married: Died: Burial: Spouse:	in: in: in: in:	
15	Name: Born: Married: Died: Burial: Spouse:	in: in: in: in:	

---

**Husband: THOMAS BURLESON**

---

Born: 1746 in:  
Married: in:  
Died: 1825 in:  
Burial:  
Father: AARON BURLESON  
Mother: RACHEL  
Other Spouses:

---

**Wife: Margaret Greene**

---

Born: in:  
Died: in:  
Burial:  
Father:  
Mother:  
Other Spouses:

---

---

**CHILDREN**

---

1	Name: <b>AARON (BIG AARON) BURLESON</b>
M	Born: 1774 in: CAIN CREEK, MITHCHEL CO, North Carolina Died: 09 Aug 1851 in: Cane Creek, North Carolina Burial: Married: 1795 in: NC Spouse: Emelia (LIBBY) McKinney
2	Name: JONATHAN O. BURLESON
M	Born: 1799 in: Died: in: Burial: Married: in: Spouse:
3	Name: SIMEON BURLESON
M	Born: 1771 in: Died: 1840 in: Burial: Married: in: Spouse: MARY LEDFORD
4	Name: Born: in: Married: in: Died: in: Burial: in: Spouse:
5	Name: Born: in: Married: in: Died: in: Burial: in: Spouse:
6	Name: Born: in: Married: in: Died: in: Burial: in: Spouse:

---

---

**Husband: Aaron (BIG AARON) Burleson**

---

Born: 1774 in: CAIN CREEK, MITHCHEL CO, North Carolina  
Married: 1795 in: NC  
Died: 09 Aug 1851 in: Cane Creek, North Carolina  
Burial:  
Father: THOMAS BURLESON  
Mother: Margaret Greene  
Other Spouses:

---

**Wife: Emelia (LIBBY) McKinney**

---

Born: 1775 in: NC  
Died: 1850 in: Cane Creek, North Carolina  
Burial:  
Father: SALVADORE POORE  
Mother: EMELIA CLARK  
Other Spouses:

---

**CHILDREN**

---

1 F	Name: ? Burleson Born: Bet. 1801 - 1810 in: Married: in: Died: in: Burial: Spouse:
2 M	Name: Wilson (WILT) Burleson Born: 25 Jul 1805 in: BURKE Co., North Carolina Died: 25 Jul 1876 in: BURKE CO, North Carolina 5366263 Burial: in: BURLESON CEM, AVERY CO, NC Married: in: Spouse: Frances (FRANKIE) Davis
3 M	Name: John Burleson Born: Abt. 1806 in: Cane Creek area, Burke Co., North Carolina Died: Abt. 1839 in: Cane Creek area, Yancy Co., North Carolina Burial: Married: 24 Apr 1824 in: Burke Co., North Carolina Spouse: Gemina Young
4 M	Name: <b>THOMAS JEFFERSON BURLESON</b> Born: 09 Apr 1809 in: Cane Creek, Mitchel Co., North Carolina Died: 01 Feb 1896 in: North Carolina 11304373 Burial: in: BURLESON CEM, BAKERSVILLE, MITCHELL CO, NC Married: Abt. 1836 in: Spouse: ? LNU Married: 1839 in: Spouse: Lydia Eliza Wiseman
5 F	Name: Ann Burleson Born: Bet. 1810 - 1814 in: Died: in: Burial: Married: in: Spouse: Samuel McKinney
6 M	Name: William M Burleson Born: 10 May 1813 in: Burke Co., North Carolina Died: 30 May 1878 in: 13067785 Burial: in: BURLESON CEM, BAKERSVILLE, MITCHELL CO, NC Married: in: Spouse: Hannah Poore
7 M	Name: Charles Burleson Born: Abt. 1814 in: Died: 1888 Burial: Married: Spouse: Nancy Melinda Erwin

---

**Husband: THOMAS JEFFERSON BURLESON**

---

Born: 09 Apr 1809 in: Cane Creek, Mitchel Co., North Carolina  
Married: 1839 in:  
Died: 01 Feb 1896 in: North Carolina 11304373  
Burial: in: BURLESON CEM, BAKERSVILLE, MITCHELL CO, NC  
Father: Aaron (BIG AARON) Burleson  
Mother: Emelia (LIBBY) McKinney  
Other Spouses: ? LNU

---

**Wife: Lydia Eliza Wiseman**

---

Born: 05 May 1820 in: Burke Co., North Carolina  
Died: 31 Dec 1916 in: Cane Creek, Mitchel Co., North Carolina 11304382  
Burial: in: BURLESON CEM, BAKERSVILLE, MITCHELL CO, NC  
Father:  
Mother:  
Other Spouses:

---

**CHILDREN**

---

1 F	Name: Julia Ann Burleson Born: 15 Apr 1841 in: Yancy Co. North Carolina Died: 27 Jan 1921 in: Bakersville, Mitchel Co., NC 120052618 Burial: in: RALPH McKINNEY CEM, MITCHELL CO, NC Married: in: Spouse: REUBEN BROWN McKINNEY
2 M	Name: Joseph M. Burleson Born: 29 Apr 1843 in: Yancy Co. North Carolina Died: 08 Feb 1917 in: Cane Creek, Avery Co. North Carolina Burial: Married: 06 Mar 1866 in: Mitchel Co, North Carolina Spouse: Martha Elizabeth McKinney Married: 30 Sep 1899 in: Spouse: Sarah Frances Pittman
3 M	Name: <b>CHARLES WESLEY BURLESON</b> Born: 16 Dec 1844 in: Cane Creek area, Yancy Co., North Carolina Died: 14 Mar 1929 in: Toe River Twp., Avery Co, NC 11303654 Burial: in: YELLOW MOUNTAIN CEM, PLUMTREE, AVERY CO, NC Married: 16 Dec 1869 in: Mitchel Co, North Carolina Spouse: Olive Sophia English
4 F	Name: Susan Caroline Burleson Born: 1849 in: North Carolina Died: 1924 in: 142408108 Burial: in: G H FRANKLIN CEM, VALLEY FORGE, CATER CO, TN Married: in: Spouse: General Henry Franklin
5 M	Name: William C. Burleson Born: Mar 1852 in: Yancy Co. North Carolina Died: 26 Feb 1939 in: Cane Creek, Mitchel Co., NC 13399383 Burial: in: BURLESON CEM, BAKERSVILLE, MITCHELL CO, NC Married: 20 Aug 1880 in: Mitchel Co, North Carolina Spouse: Lydia Adelaide McKinney
6 M	Name: John Brown Burleson Born: 28 Jul 1854 in: North Carolina Died: 12 Feb 1938 in: Ingalls Twp., Avery Co, North Carolina 54570836 Burial: in: PINE GROVE UMC CEM, AVERY CO, NC Married: in: Spouse: Texie Queen Married: 09 Oct 1872 in: Mitchel Co, North Carolina Spouse: Adelaide J (ADDIE) Keener

---

7	Name: Mira Vandalia Burleson Born: 03 Jul 1857 Died: 20 Jul 1878 Burial: Married: 17 Oct 1873 Spouse: William Aaron Buchanan	in: North Carolina in: North Carolina  in: Mitchel Co, North Carolina
8	Name: Thomas Jefferson Burleson Born: 26 Mar 1860 Died: 08 Nov 1910 Burial: Married: 19 Mar 1882 Spouse: Sarah Burleson	in: Yancy Co. North Carolina in:  in: Mitchel Co, North Carolina
9	Name: Lydia Ellen Burleson Born: 15 Sep 1863 Died: 15 May 1942 Burial: Married: 19 Feb 1886 Spouse: John M. Houston	in: Mitchel Co, North Carolina in: Spear, Mitchel Co., North Carolina  in: Mitchel Co, North Carolina
10	Name: Born: Married: Died: Burial: Spouse:	in: in: in: in:
11	Name: Born: Married: Died: Burial: Spouse:	in: in: in: in:
12	Name: Born: Married: Died: Burial: Spouse:	in: in: in: in:
13	Name: Born: Married: Died: Burial: Spouse:	in: in: in: in:
14	Name: Born: Married: Died: Burial: Spouse:	in: in: in: in:
15	Name: Born: Married: Died: Burial: Spouse:	in: in: in: in:



---

**Husband: Charles Wesley Burleson**

---

Born: 16 Dec 1844 in: Cane Creek area, Yancy Co., North Carolina  
Married: 16 Dec 1869 in: Mitchel Co, North Carolina  
Died: 14 Mar 1929 in: Toe River Twp., Avery Co, NC 11303654  
Burial: in: YELLOW MOUNTAIN CEM, PLUMTREE, AVERY CO, NC  
Father: THOMAS JEFFERSON BURLESON  
Mother: Lydia Eliza Wiseman  
Other Spouses:

---

**Wife: Olive Sophia English**

---

Born: 06 Oct 1846 in: LINVILLE FALLS, BURKE CO, NC  
Died: 31 Jan 1932 in: Plumtree Twp., Avery Co., NC 11303675  
Burial: in: YELLOW MOUNTAIN CEM, PLUMTREE, AVERY CO, NC  
Father: JOHN MILTON ENGLISH  
Mother: MARTHA L OAKES  
Other Spouses:

---

**CHILDREN**

---

1 M	Name: Robert Milton Burleson Born: 28 Feb 1871 Died: 15 Sep 1957 Burial: Married: 11 Dec 1894 Spouse: Ora A. English	in: MITCHELL CO, NC in: Grassy Creek, Mitchel Co., NC 47702444 in: SPRUCE PINE MEM CEM, SPRUCE PINE, MITCHELL CO, NC in: Mitchel Co, North Carolina
2 F	Name: Tuppie Leanna Burleson Born: 24 Jun 1873 Died: 23 Dec 1959 Burial: Married: 17 Jul 1895 Spouse: Albert Rosecrans Brown	in: North Carolina in: 37126449 in: EVERGREEN CEM, ERWIN, UNICOI CO, TN in: Mitchel Co, North Carolina
3 M	Name: Samuel Leander Burleson Born: 16 Nov 1875 Died: 24 Aug 1945 Burial: Married: Abt. 1908 Spouse: Bridget (BIDA) Penland	in: MITCHELL CO, NC in: Plumtree Twp., Avery Co., NC 60291600 in: YELLOW MOUNTAIN CEM, PLUMTREE, AVERY CO, NC in:
4 F	Name: Jodie Lee Burleson Born: 20 Dec 1877 Died: 11 Oct 1976 Burial: Married: 14 Sep 1898 Spouse: Potter McClay Brown	in: North Carolina in: BUNCOMBE CO, NC 36433906 in: RIVERSIDE CEM, ASHEVILLE, BUNCOMBE CO, NC in: Mitchel Co, North Carolina
5 M	Name: David Patterson Burleson Born: 15 May 1880 Died: 23 Aug 1957 Burial: Married: 15 Oct 1907 Spouse: MAUDE HUGHES	in: HAWK, MITCHELL CO, NC in: Grassy Creek, Mitchel Co., NC 47525411 in: HUGHES CEM, HUGHES, AVERY CO, NC in: Mitchel Co, North Carolina
6 M	Name: William Brown DR Burleson Born: 01 Jun 1882 Died: 02 Oct 1958 Burial: Married: Spouse: Grace Ollis Married: Spouse: Elizabeth Godfry	in: MITCHELL CO, NC in: Plumtree Twp., Avery Co., NC 47808598 in: YELLOW MOUNTAIN CEM, PLUMTREE, AVERY CO, NC in: in:
7 M	Name: Henry Burleson Born: 05 Jun 1885	in: North Carolina

7	Died: 07 Nov 1975	in: MARION, MCDOWELL CO, NC 33301537
M	Burial:	in: YELLOW MOUNTAIN CEM, PLUMTREE, AVERY CO, NC
	Married: 31 Oct 1917	in:
	Spouse: Fannie Banner	
8	Name: Frank Burleson	in: North Carolina
	Born: 01 May 1888	in: Banner Elk Twp., Avery Co., NC 33301723
	Died: 23 Sep 1959	in: YELLOW MOUNTAIN CEM, PLUMTREE, AVERY CO, NC
M	Burial:	in: Mitchel Co, North Carolina
	Married: 17 Sep 1910	in:
	Spouse: Beatrice C. Vance	
	Married: 01 Jun 1917	
	Spouse: Bertie Crater Hamrick	
9	Name:	
	Born:	in:
	Married:	in:
	Died:	in:
	Burial:	in:
	Spouse:	
10	Name:	
	Born:	in:
	Married:	in:
	Died:	in:
	Burial:	in:
	Spouse:	
11	Name:	
	Born:	in:
	Married:	in:
	Died:	in:
	Burial:	in:
	Spouse:	
12	Name:	
	Born:	in:
	Married:	in:
	Died:	in:
	Burial:	in:
	Spouse:	
13	Name:	
	Born:	in:
	Married:	in:
	Died:	in:
	Burial:	in:
	Spouse:	
14	Name:	
	Born:	in:
	Married:	in:
	Died:	in:
	Burial:	in:
	Spouse:	
15	Name:	
	Born:	in:
	Married:	in:
	Died:	in:
	Burial:	in:
	Spouse:	