

Wall of Honor

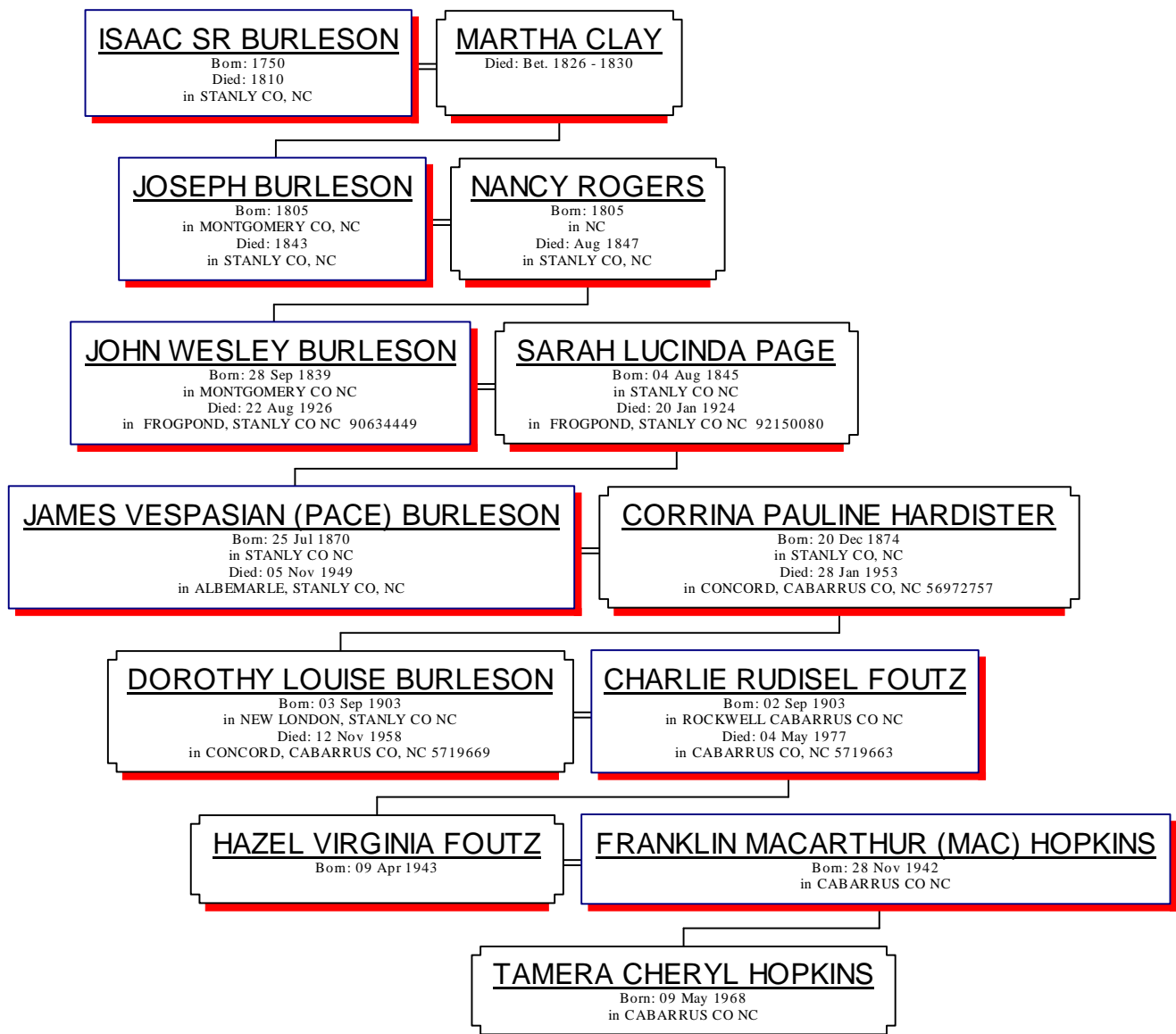
Mac and Hazel Foutz Hopkins

23rd Annual Reunion October 21, 2018

This year at our Annual Burleson Family Reunion we will honor Mac and Hazel Foutz Hopkins and place them on our Wall of Honor. This is the first time we will honor a husband and wife team. This is because they were both very involved in getting our group started.

Hazel is the Burleson descendant and she helped Donald Burleson, who was living in New York at the time, plan and made all the arrangements for our first Reunion on Morrow Mountain. Several different times Mac would say, as we were enlisting him for help, "I am not even a Burleson" and we would always say "But married one and that is just as good". Mac was always ready to help when we needed him, one time and I will never forget this, Mac said, "I might not be good on a computer, but this is what I like to do". Believe me when I say, he was a great deal of help on all our cemetery projects. This is all explained in this article. Below is Hazel's Family Chart showing her line down from Isaac Burleson Sr.

Direct Descendants of ISAAC SR BURLESON



Charles and Dorothy Louise Burleson Foutz are Hazel's parents, Charles was born September 2, 1903 in Concord, Cabarrus County, NC and died May 4, 1977 in Cabarrus County, NC. Dorothy was born September 3, 1903 in New London, Stanly County, NC and died November 12, 1958 in Concord, Cabarrus County, NC.

The photo on the right is of Hazel with her mother Dorothy.



The photo to the left is Hazel's grandmother Corrina holding her mother Dorothy, the small girl is Mary Dorothy's sister and the boy is Jonathan Hardister, Corrina's nephew.

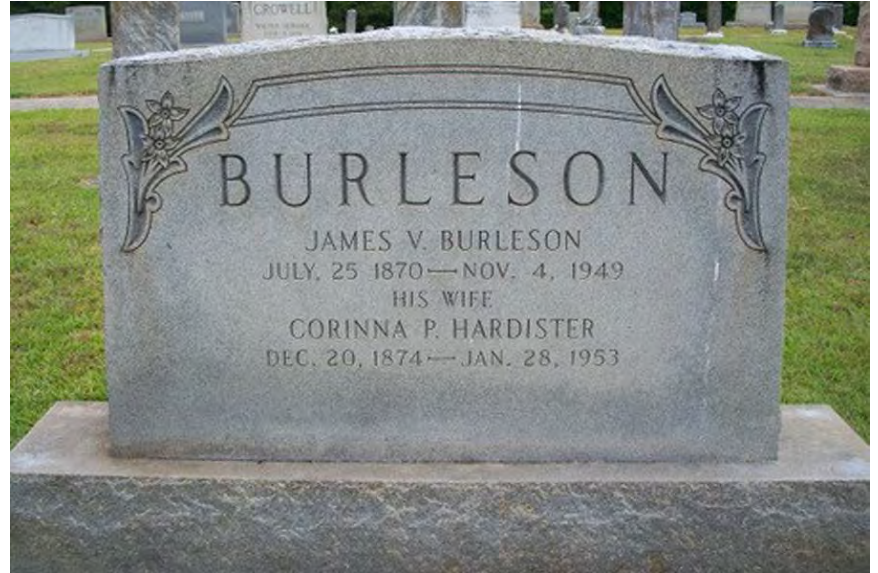


These are their markers in Grace Lower Stone Church Cemetery, Rockwell, Rowan County, NC.



Hazel's grandparents are James Vespasian (Pace) and Corrina Hardister Burleson, James was born July 25, 1870, in Stanly County, NC and died in Albemarle, NC, November 5, 1949. Corrina was born December 20, 1874 in Stanly County, NC and died January 28, 1953 in Concord, Cabarrus County, NC

Photo to the left is Pace and Corrina Hardister Burleson and the stone below is their stone in NEW LONDON CEM, NEW LONDON, STANLY CO, NC



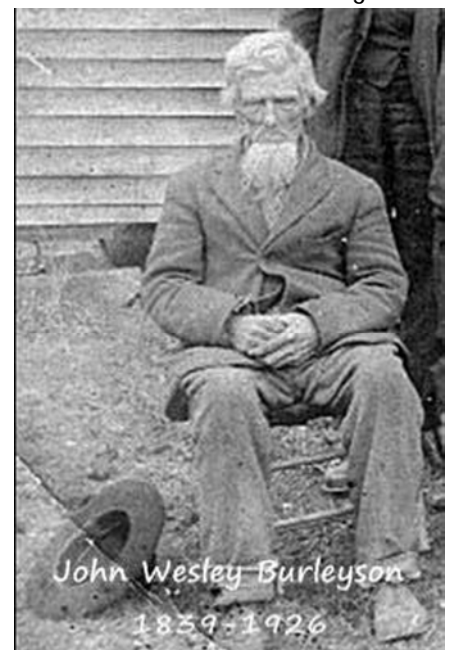
The third child of John Wesley Burleson was James Vespasian Burleson, also known as J. V. or "Pace" Burleson. Pace was the first Burleson in our line to have an advanced education, but no evidence of a College education has been located. We do know that Pace was a teacher in the New London school in the 1890's. It was here that he met his wife, Corinna P. Hardister, who also taught school in the 1890's. Family tradition says that Corinna had a college degree, but only listed her formal educations as "read and write" on the birth certificate on her son, Louis Burleson.

Corinna Pauline Hardister was the daughter of Jonathan W. and Julia Hardister. Jonathan Hardister served in the Civil War in a cannon brigade from Salisbury North Carolina, and was wounded in the buttocks at Pickett's charge in Gettysburg. Jonathan recovered in a Confederate hospital and was re-assigned to tend to the wounded until the end of the War.

Hazel's great grandparents are John Wesley and Sarah Page Burleson

- **Born:** September 28, 1839 in Montgomery County North Carolina
- **Died:** August 22, 1926 In Pleasant Grove Bap Church, Frogpond, Stanly County, North Carolina
- **Wife:** Sarah Lucinda Page, daughter of Dempsey Page
- **Military:** Fought in the Civil War, Company D of the 28th NC infantry known as the "Stanly Yankee Hunters", served in Lane's Brigade and fought at Gettysburg, surviving Pickett's charge.

For a great bio written by Donald Keith Burleson a great grandson of John Wesley Burleson go to our web page at http://www.bfrg.info/bfrg/wp-content/uploads/2012/04/Genealogy_of_John_Wesley_Burleson.pdf





Seated L/R, John Wesley Burleson, Sarah Page, Louise Jane, ?
 Middle Row, Ira Benjamin, Lander David, Carrie C., Delphia,
 Back Row, Philas Lee (Bud) ?,?,?, Brantley, Jason Burleson

John Wesley and Sarah Page Burleson buried in PLEASANT GROVE BAP CH, FROGPOND, STANLY CO NC



John Wesley Burleson's parents, and Hazel g-g-grandparents are Joseph and Nancy Rogers Burleson.

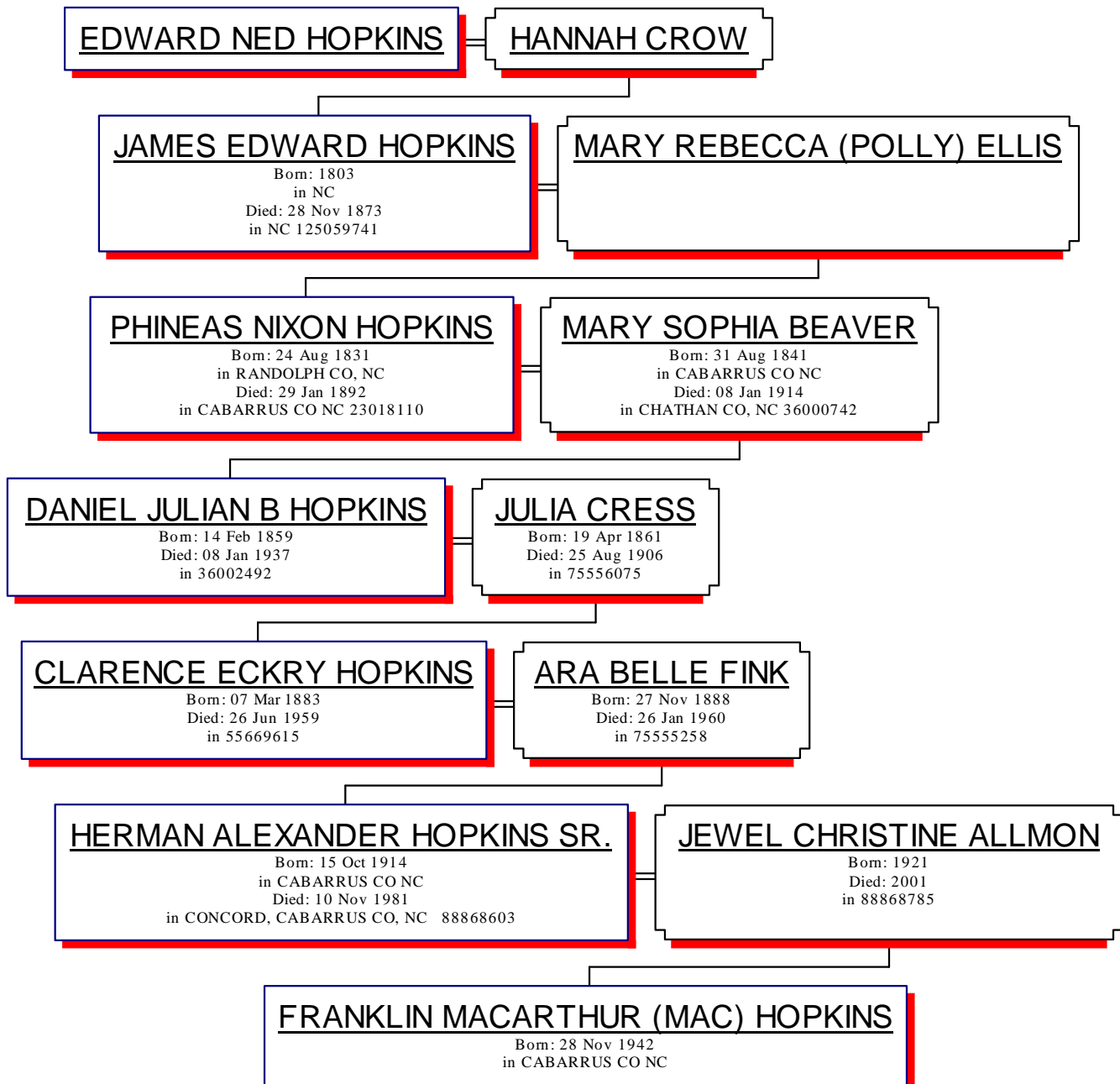
JOSEPH⁶ BURLESON (*ISAAC SR⁵, ?JOHN⁴, JONATHAN³, JOHN², EDWARD¹*) was born 1805 in MONTGOMERY CO, NC, and died 1843 in STANLY CO, NC. He married NANCY ROGERS 1828, daughter of JOHN ROGERS and SARAH BILES. She was born 1805 in NC, and died Aug 1847 in STANLY CO, NC.

Joseph's parents are Isaac and Martha Clay Burleson.

ISAAC SR⁵ BURLESON (*?JOHN⁴, JONATHAN³, JOHN², EDWARD¹*) was born 1750, and died 1810 in STANLY CO, NC. He married MARTHA CLAY 1781. She died Bet. 1826 - 1830.

That is Hazel's family line, and now I will add what we know about Mac Hopkins family line.

Direct Descendants of EDWARD NED HOPKINS



When we first formed the BFRG, our honorees were involved in every aspect of the creation. We would like to share just a few of the projects they were involved with. This doesn't begin to cover all aspects of their involvement. But it is because of people like Mac and Hazel helping from the start and that is why we want to Honor them with this honor on our **"Wall of Honor"**

First NC Burleson Family Reunion
by Don Burleson
June 2, 1996

With the help of **Hazel Foutz Hopkins** and P.K. Burleson we were able to reserve a picnic area at Morrow Mountain State Park, and our task became one of getting as many Burleson's interested as possible. The reunion began with a mass mailing to all known Burlesons in the area around Stanly county, informing them of all that we had to offer and encouraging them to participate. A classified ad was also placed in the Stanly county newspaper, while J.D and P.K spread the word by telephone. From this first reunion came the start of the **Burleson Family Research Group**

Charter Members

of the

Burleson Family Research Group

First Meeting August 1996

Alvin & Louise Burleson

Donald K. Burleson

Daniel Burleson

Jeff Burleson

John H. Burleson

J.D. & Karol Burleson

Lena Burleson

P.K. & Hazel Burleson

Perry Burleson

Tony Burleson

Mac & Hazel Hopkins

Aaron Lorch

Hilda Burleson Snuggs

Moving the Stone November 15, 2003

After we got the stone in the right position, then two more Burlasons, Calvin Burluson and **Mac Hopkins** took over. Mac married a



Burluson, that is just as good. They had built a stainless steel frame with stainless steel achors to attach the marker to the stone. I thought it was great when Mac told us that he didn't know much about computers, but this was what he liked to do. He brought all the tools needed to drill the holes in this Rhyolit Stone. He had to chisel some rough edges off to make the face smooth enough for the frame. Calvin and Mac worked hard to make sure the marker will stay on the stone for many years to come.



We had a good number of people there. Sue Forrest, Carol Burluson and Hilda Snuggs were making sure it was done correctly. It looked great -- much better than we ever hoped! And this was due to the efforts of many talented individuals.

John H., JD, Calvin Burluson, and **Mac Hopkins**



The BFRG had a workday on January 17, 2004



The photo above was taken last spring of the Burleson Cemetery #2 on Parker Road. The BFRG had a workday on January 17, 2004. Below is a photo taken after the work was complete. Members present doing the work were, John H. and Nancy Burleson, Johnny Paul, Kenneth, Don, Dale Burleson, **Mac Hopkins** and Travis Dry. Hilda Burleson Snuggs and Klondel Burleson Nunn provided a great lunch for all the workers.





Working Together! - Burleson II Cemetery

Members of the Burleson Family Research Group along with friends from Stanly County met on Saturday January 17, 2004 to complete a task they had been planning for a number of weeks...the clean up of the Burleson II Cemetery. The Burleson II Cemetery is located on Parker Road in Stanly County. Trees had to be trimmed, holes had to be dug, posts had to be set and the trimmings and brush had to be cleaned up or burned.

There to help was Don, Kenneth, Johnny Paul, John Hoyle, Dale and Nancy Burleson, and **Mac Hopkins**. Mac brought his tractor with an auger attachment and Johnny Paul drove the tractor while Mac lined up the auger. This was a fantastic time saver. All the holes were dug in just over an hour. John used his chainsaw to cut down branches and small trees and Don, Kenneth, and Dale picked up the branches and brush and piled it on the bonfire. Nancy kept her eye on the fire so it wouldn't spread.

After this was done, all the men worked on setting the posts and pouring some cement around them to keep them from tilting. (John came back the next week and added the chain after the posts were set).

As they completed the work J.D Burleson and Travis Drye came by to check it out. Back at Lena's Farmhouse preparing a fantastic lunch for the workers were Klone Del Nunn and Hilda Snuggs. They served us up some delicious baked spaghetti, chili, salad and various deserts. It was so good to see everyone working together toward the preservation of this cemetery.

Next in line on the BFRG list for clean up and repair is the Susie Harwood Cemetery on Rowland Road near Big Bear Creek. That'll be another story!

Nancy L. Burleson



Burleson Cemetery #1 Before



Burleson Cemetery #1 After

This is our latest addition to Burleson Cemetery # 1. Johnny Paul Burleson had this bolder moved from his farm to the cemetery and **Mac Hopkins placed the frame to hold the marker.**

Hilda Burleson Snuggs is in the process of getting the deed changed to insure the cemetery is protected in the future. This cemetery is located on Burleson Road. Go by and see what a great job was done to protect this cemetery.

